



**SINGLE SHAFT ELECTRIC GRASS
TRIMMER/BRUSH CUTTER
MODEL EKEBC
INSTRUCTION MANUAL**



PLEASE READ AND SAVE THE INSTRUCTION MANUAL FOR FUTURE REFERENCE

Any questions please call the Eckman helpline on: 0844 441 3011 or go to www.eckman.co.uk

Contents:

I. SYMBOLS / PICTURES MARKED ON THE PRODUCT OR USED IN MANUAL.....	2
II. SAFETY INSTRUCTIONS.....	3
III. GENERAL POWER TOOL SAFETY WARNING	3-6
IV. INTENDED USE.....	6
V. PARTS IDENTIFICATION.....	7-8
VI. TECHNICAL DATA.....	8
VII.ASSEMBLY.....	8-12
VIII. CONNECTION.....	12
IX. OPERATION.....	12-13
X. MAINTENANCE.....	13
XI. CLEANING & STORAGE.....	13
XII. GUARANTEE.....	13
EC DECLARATION OF CONFORMITY	14
EXPLODED VIEW&PART LIST.....	15-17

I. SYMBOLS PICTURES MARKED ON THE PRODUCT OR USED IN MANUAL



Read the user manual before using the machine



WARNING!



Wear CE approved eye protection!

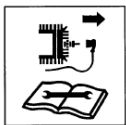
Wear CE approved ear and head protection!



Wear gloves to protect your hands.



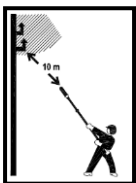
Wear sturdy and high safety boots.



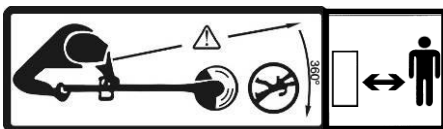
Before maintenance or repair – switch off the machine and unplug from mains supply



Debris may be ejected – take care!



Keep the distance at least 10m from electrical lines when working with the trimmer



Keep bystanders at a distance of no less than 15m from the work area.



Note the direction of the rotation of the cutting tools.

II .Safety Instructions



If not used properly this product can be dangerous. The warnings and safety instructions must be followed to ensure reasonable safety and efficiency in using this product. The operator is responsible for following the warnings and instructions in this manual and on the product. Never use the product unless the guards provided by the manufacturer are in the correct position.



For safety reasons, children under the age of 16 and people not familiar with these operating instructions must not use this equipment. Persons with reduced physical or mental abilities may use the equipment only if they are supervised or instructed by a responsible person.

III. General Power Tool Safety Warnings



WARNING ! Read all safety warnings and all instructions. Failure to follow the warnings and instructions may result in electric shock, fire and /or serious injury.

Save all warnings and instructions for future reference.

The term “power tool” in the warnings refers to your mains operated (corded) power tool or battery-operated (cordless) power tool.

1) Work area safety

a) Keep work area clean and well lit.

Cluttered or dark areas invite accidents.

b) Do not operate power tools in explosive atmospheres, such as in the presence of flammable liquids, gases or dust.

Power tools create sparks which may ignite the dust or fumes.

c) Keep children and bystanders away while operating a power tool.

Distractions can cause you to lose control.

2) Electrical safety

a) Power tool plugs must match the outlet. Never modify the plug in any way. Do not use any adaptor plugs with earthed (grounded) power tools.

Unmodified plugs and matching outlets will reduce risk of electric shock.

b) Avoid body contact with earthed or grounded surfaces, such as pipes, radiators, ranges and refrigerators.

There is an increased risk of electric shock if your body is earthed or grounded.

c) Do not expose power tools to rain or wet conditions.

Water entering a power tool will increase the risk electric shock.

d) Do not abuse the cord. Never use the cord for carrying, pulling or unplugging the power tool. Keep cord away from heat, oil, sharp edges or moving parts.

Damaged or entangled cords increase the risk of electric shock.

e) When operating a power tool outdoors, use an extension cord suitable for outdoor use.

Use of a cord suitable for outdoor use reduces the risk of electric shock.

f) If operating a power tool in a damp location is unavoidable, use a residual current device (RCD) protected supply.

Use of an RCD reduces the risk of electric shock.

3) Personal safety

a) Stay alert, watch what you are doing and use common sense when operating a power tool. Do not use a power tool while you are tired or under the influence of drugs, alcohol or medication.

A moment of inattention while operating power tools may result in serious personal injury.

b) Use personal protective equipment. Always wear eye protection.

Protective equipment such as dust mask, non-skid safety shoes, hard hat, or hearing protection used for appropriate conditions will reduce personal injuries.

c) Prevent unintentional starting. Ensure the switch is in the off-position before connecting to power source and /or battery pack, picking up or carrying the tool.

Carrying power tools with your finger on the switch or energising power tools that have the switch on invites accidents.

d) Remove any adjusting key or wrench before turning the power tool on.

A wrench or a key left attached to a rotating part of the power tools may result in personal injury.

e) Do not overreach. Keep proper footing and balance at all times.

This enables better control of the power tool in unexpected situations.

f) Dress properly. Do not wear loose clothing or jewellery. Keep your hair, clothing and gloves away from moving parts.

Loose clothes, jewellery or long hair can be caught in moving parts.

g) If devices are provided for the connection of dust extraction and collection facilities, ensure these are connected and properly used.

Use of dust collection can reduce dust-related hazards.

4) Power tool use and care

a) Do not force the power tool. Use the correct power tool for your application.

The correct power tool will do the job better and safer at the rate for which it was designed.

b) Do not use the power tool if the switch does not turn it on and off.

Any power tool that cannot be controlled with the switch is dangerous and must be repaired.

c) Disconnect the plug from the power source and /or the battery pack from the power tool before making any adjustments, changing accessories, or storing power tools.

Such preventive safety measures reduce the risk of starting the power tool accidentally.

d) Store idle power tools out of the reach of children and do not allow persons unfamiliar with the power tool or these instructions to operate the power tool.

Power tools are dangerous in the hands of untrained users.

e) Maintain power tools. Check for misalignment or binding of moving parts, breakage of parts and any other condition that may affect the power tool's operation. If damaged, have the power tool repaired before use.

Many accidents are caused by poorly maintained power tools.

f) Keep cutting tools sharp and clean.

Properly maintained cutting tools with sharp cutting edges are less likely to bind and are easier to control.

g) Use the power tool, accessories and tool bits etc in accordance with these instructions, taking into account the working conditions and the work to be performed.

Use of the power tool for operations different from those intended could result in a hazardous situation.

5. Service

Have your power tool serviced by a qualified repair person using only identical replacement parts.

This will ensure that the safety of the power tool is maintained.

Pole hedge trimmer safety warnings:

- **Keep all parts of the body away from the cutter blade. Do not remove cut material or hold material to be cut when blades are moving. Make sure the switch is off when clearing jammed material.**

A moment of inattention while operating the hedge trimmer may result in serious personal injury.

- **Carry the pole hedge trimmer by the handle with the cutter blade stopped. When transporting or storing the pole hedge trimmer always fit the cutting device cover.**

Proper handling of the pole hedge trimmer will reduce possible personal injury from the cutter blades.

- **Hold the power tool by insulated gripping surfaces only, because the cutter blade may contact hidden wiring or its own cord.**

Cutter blades contacting a “live” wire may make exposed metal parts of the power tool “live” and could give the operator an electric shock.

- **Keep cable away from the cutting area.**

During operation the cable may be hidden in shrubs and can be accidentally cut by the blade.

Additional Safety Recommendations

Work area safety

Only use the product in the manner and for the functions described in these instructions. The operator or user is responsible for accidents or hazards occurring to other people or their property.

Electrical safety

The British Standards Institute recommend the use of a Residual Current Device (R.C.D.) with a tripping current of not more than 30mA. Check your R.C.D. every time you use it. Before use, examine cable for damage, replace it if there are signs of damage or ageing.

Do not use the product if the electric cables are damaged or worn.

Immediately disconnect from the mains electricity supply if the cable is cut, or the insulation is damaged. Do not touch the electric cable until the electrical supply has been disconnected.

Your electric cable must be untangled, tangled cables can overheat and reduce the efficiency of your product.

Always switch off at the mains before disconnecting any plug, cable connector or extension cable.

Switch off, remove plug from mains and examine electric supply cable for damage or ageing before winding cable for storage. Do not repair a damaged cable, replace it with a new one.

Always wind cable carefully, avoiding kinking.

Use only on AC mains supply voltage shown on the product rating label.

Under no circumstances should an earth be connected to any part of the product.

Cables

Use only permitted extension cables as per HD 516. → Ask your electrical specialist.

Personal safety

Always wear suitable clothing, gloves, and stout shoes.

Thoroughly inspect the area where the product is to be used and remove all wires and other foreign objects.

Before using the machine and after any impact, check for signs of wear or damage and repair as necessary.

Never attempt to use an incomplete product or one with an unauthorised modification.

Power tool use and care

Know how to stop the product quickly in an emergency.

Never hold the product by the guard.

Do not use the **Grass** Trimmer if the protection equipment (hand protection, 2-hand safety switch, protection cover, quick blade-stop) are damaged.

Do not use ladders whilst operating the product.

Remove the plug from the mains :

- before leaving the product unattended for any period;
- before clearing a blockage;
- before checking, cleaning or working on the appliance;
- if you hit an object. Do not use your product until you are sure that the entire product is in a safe operating condition;
- if the product starts to vibrate abnormally. Check immediately. Excessive vibration can cause injury.
- before passing to another person.

Maintenance and storage



RISK OF INJURY !
Do not touch blades.

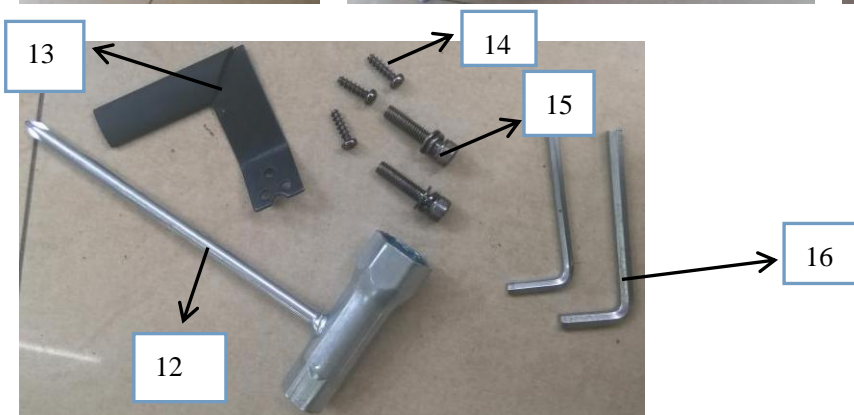
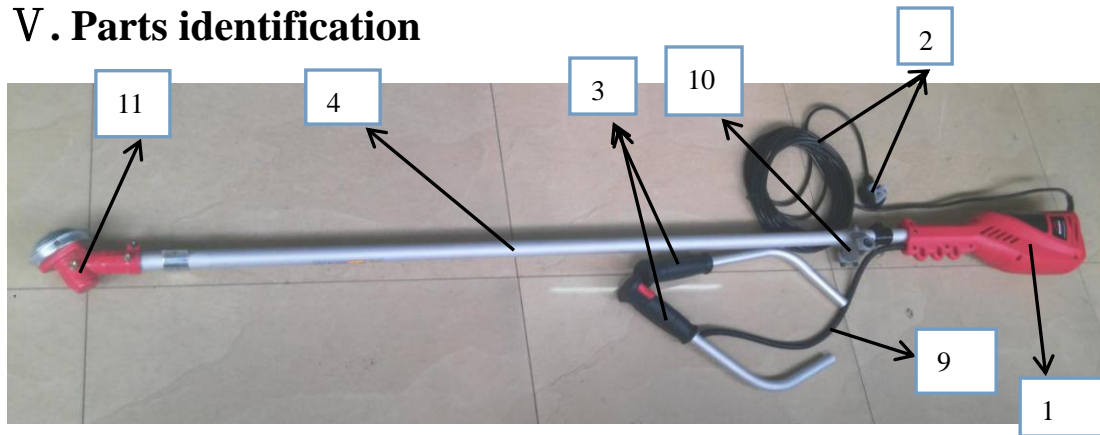
→ **When finishing or interrupting work push up protection cover.**

Keep all nuts, bolts and screws secure to be sure the machine is in safe working condition.

IV. Intended Use

This Electric **Grass** Trimmer/brush cutter is intended for cutting Grass, shrubs and bushes in private domestic gardens and allotments. If used for purposes other than those intended, this will invalidate your guarantee.

V. Parts identification



1. Machine motor

2. 10M power cord and BS plug
3. Control handle
4. Outer shaft with inner drive shaft
5. Safety guard
6. 40 tooth blade
7. Shoulder strap
8. Bump feed nylon cutter
9. Throttle cable
10. Handle bracket
11. Brush cutter/trimmer gear box
12. Hexagon key
13. Line cutter
14. Screw
15. Bolt
16. Hexagon wrench

Before assembly firstly unpack and check all parts have been supplied. If you think any parts are missing, check the packaging again before calling the Eckman helpline on 0844 441 3011.

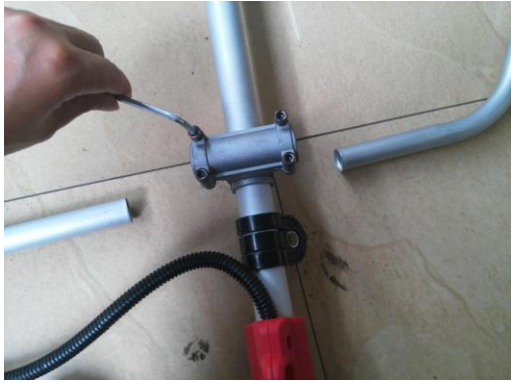
VI. Technical data

ECKMAN Code/Factory Code	EKEBC/SF7A205
Rated Voltage	230V~ 50Hz
Rated Power:	1400W
No Load Speed of Power Unit	10000rpm
Cutting width	420mm
Set Weight (with 10m power cord)	7.3 kg
Overall length of machine	180cm
Nylon diameter	1.6mm*5.0mm
Measured Sound Power	95 dB L _{WA}
Guaranteed Sound Power	96 dB L _{WA}

VII. Assembly

1) Fitting the control handle to mounting bracket

Loosen the 4 bolts on the mounting bracket. Insert the right handle (throttle lever is attached) and the left handle into the bracket completely then adjust the two handle angles in the same position and retighten the bolts securely.



2) Assemble the safety guard

Attach the line cutter to the safety guard using three bolts, then tighten by hexagon key (see photos below)

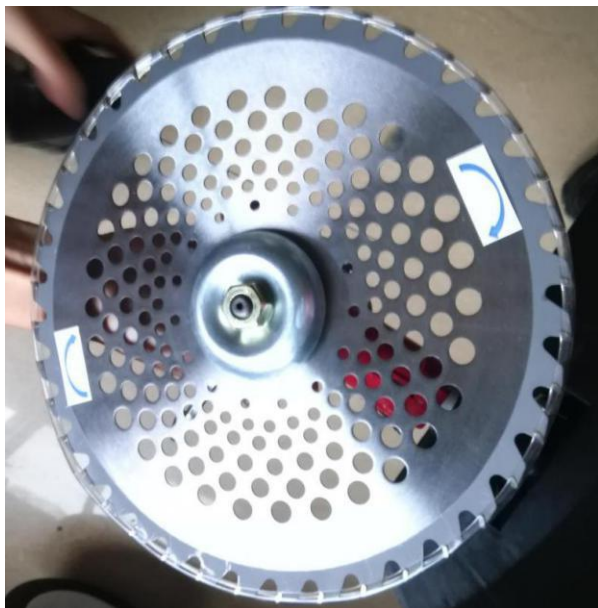
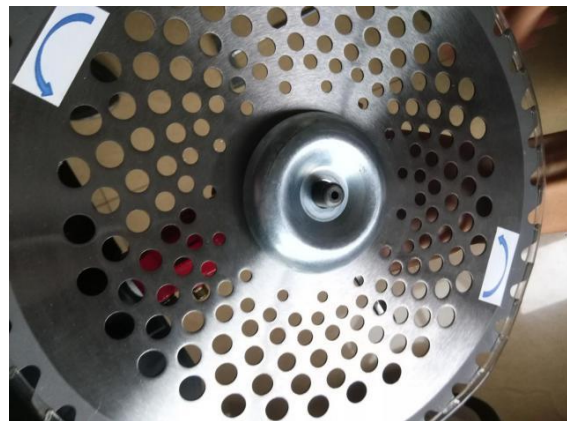
3) Fitting the safety guard to the shaft of the machine

Slide the chromed metal guard holder already affixed to the shaft into the recess on the plastic guard. Line up the four holes. Fix and tighten the two bolts using the hexagon wrench supplied. (see photos below). Fit the excess line cutter to the guard using the three screws supplied.



4) Fitting the 40 tooth blade to the machine

Loosen the blade retainer nut clockwise and remove the blade retainer. You will need to line up the two holes in the side of the cutting head assembly and insert the hex key in them to keep the blade still.(see photos below)



5) Fitting the nylon line trimmer spool (option) to the machine

If you use the unit as a grass trimmer follow the instructions below:

1. Loosen the blade retainer nut clockwise and remove the blade retainer.
2. Mount the grass trimmer head and tighten it.

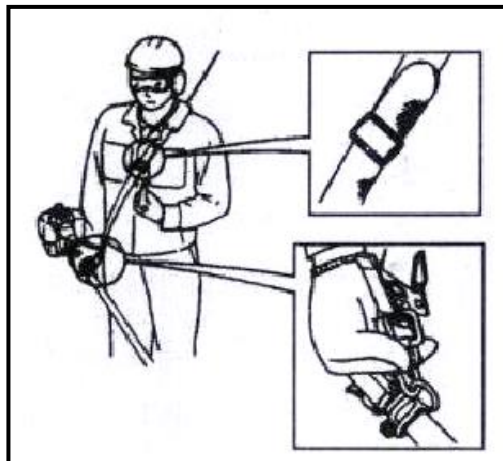


Note: Please store the blade retainer and nut in a safe place.

WARNING! Do not use the line cutting head without the plastic guard.

6) Fitting the belt :

Clip the belt clip onto to the power unit and adjust for length and comfort. (See photos as below)



VIII. CONNECTION

This machine may only be connected to single-phase 230VAC 50Hz UK Mains outlet. Ensure that the mains voltage is the same as the operating voltage indicated on the rating plate.

IX. OPERATION



WARNING:

Do not use any attachments or accessories not recommended by the manufacturer of this product. The use of attachments or accessories not recommended can result in serious personal injury and invalidate your guarantee.

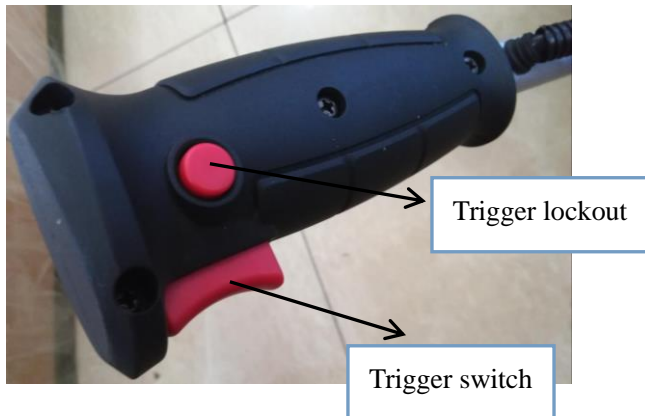
Switching on

Squeeze the trigger lockout, then squeeze the trigger.

Switching off

Release the trigger or the trigger lockout. Either will stop the machine.

(see photo as below)



NOTE: NEVER ATTEMPT TO LOCK A SWITCH IN THE ON POSITION.

X. MAINTENANCE

- Store the machine, instruction manual and accessories in a secure, dry place. In this way you will always have the information ready to hand.
- Remove dust and dirt regularly.
- Re-lubricate all moving parts at regular intervals.
- Never use caustic agents to clean plastic parts.

Never disassemble the machine and always have the trimmer maintained or repaired by a competent person at an authorized service center.

XI. CLEANING & STORAGE

Keep ventilation slots of the machine always clean.

Clean the machine using a damp cloth and a vacuum for ventilation vents. Use a brush or scrubber for hard to reach places. Do not use aggressive cleaning agents or solvents. They can attack the plastic and metal parts of the machine.

Store the machine and its accessories in a dry and frost-free place out of direct sunlight. Always store the machine in a place out of the reach of children. The optimum storage temperature is between 10 and 30°C.

XII. GUARANTEE

This product is guaranteed for a period of 36 months from date of purchase. Any modification or misuse of this machine will invalidate your guarantee. Your statutory rights remain unaffected.

EC DECLARATION OF CONFORMITY

The undersigned, as authorised by: **ZHEJIANG SAFUN INDUSTRIAL CO.,LTD**

Declares that the following equipment manufactured by **ZHEJIANG SAFUN INDUSTRIAL CO.,LTD**

has been tested and conforms to the Directive: -

EN 55014-1/A2:2011

EN 55014-2/A2:2008

EN 61000-3-2/A2:2009

EN 61000-3-3:2013

of the European Parliament and of the council on the approximation of the laws of the Member States relating to the noise emission in the environment by equipment for use outdoors.

Equipment Category - (As defined in the Directive)

Product Name: Brush cutter/ Electric grass trimmer and brush cutter

Model: Hecht1445 (ECKMAN MODEL NO.: EKEBC)

The technical documentation is kept by: **ZHEJIANG SAFUN INDUSTRIAL CO.,LTD**

Add: 7 South Mingyuan AVE,Economic Development Zone,Yongkang, Zhejiang China

The conformity assessment procedure followed was in according with Council Directive

(EN 55014-1/A2:2011; EN 55014-2/A2:2008; EN 61000-3-2/A2:2009; EN 61000-3-3:2013)

Guaranteed Sound Power Level: -----96dB

A copy of this certificate has been submitted to the European Commission and to EU Member State: the United Kingdom

Jinhua , May, 2016



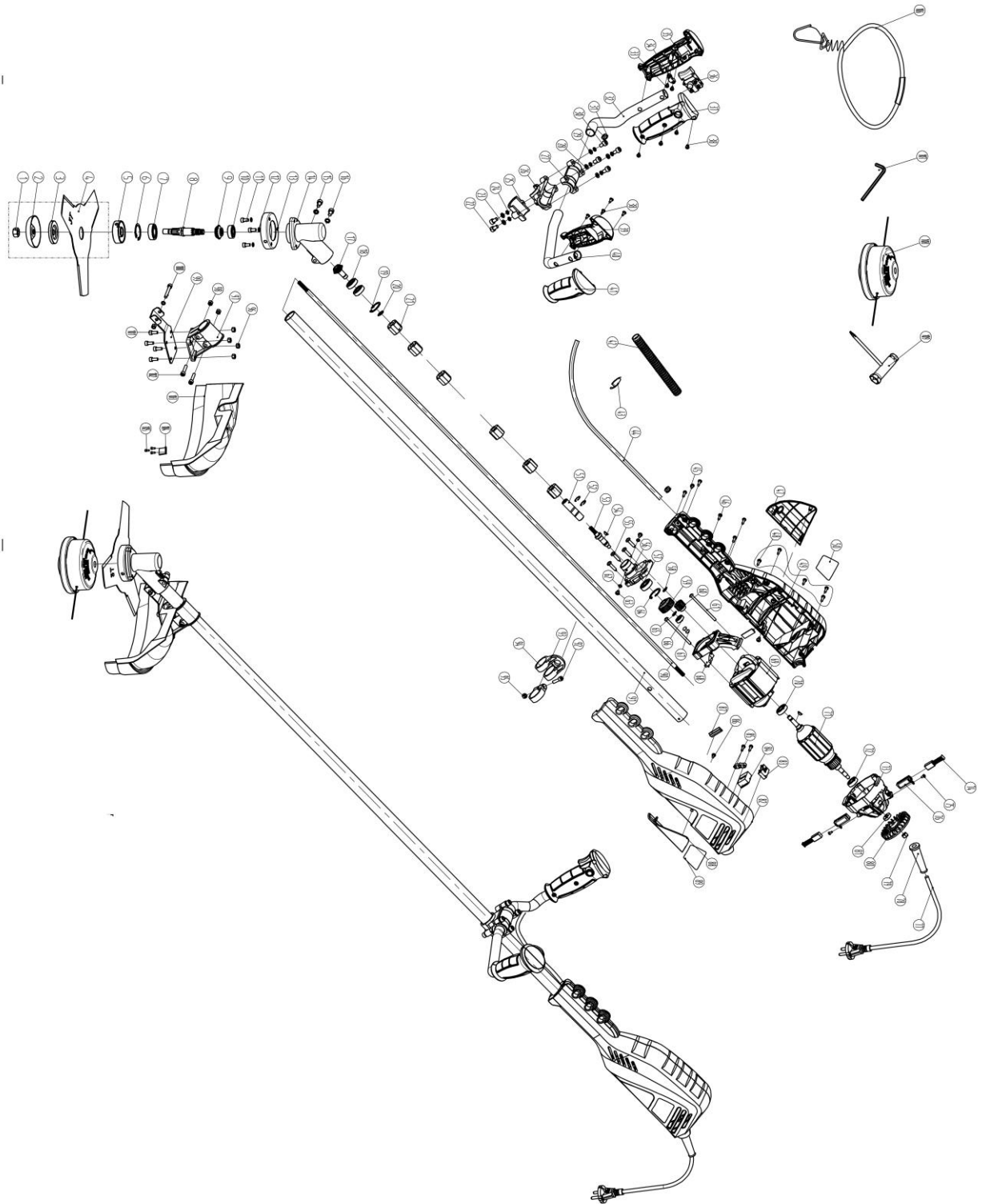
(Manufacturing Factory Stamp)

IMPORTED BY ECKMAN CO.,LTD

ADD: 29 WELBECK STREET,LONDON W1G 8DA, ENGLAND



EXPLODED VIEW&PART LIST



NO.	DESCRIPTION	QTY	NO.	DESCRIPTION	QTY
1	Hexagon nut	1			
2	Front safety cover	1	36	Switch	1
3	Front pressing plate	1	37	Switch handle housing	1
4	Three tooth blade	1	38	Cross recessed pan head tapping screw	8
5	Rear pressing plate	1	39	Front handle housing(right)	1
6	Circlips for hole	1	40	Aluminium tube	1
7	Deep groove ball bearing	1	41	Front handle housing(left)	1
8	Splined shaft	1	42	Corrugated pipe	1
9	Bevel gear wheel	1	43	Nylon ribbon	2
10	Deep groove ball bearing	1	44	Oblate power cord	1
11	Hexagon socket cap screw	3	45	Cross recessed pan head tapping screw	1
12	Spring washer	3	46	Cross recessed pan head tapping screw	5
13	Rear safety cover	1	47	Right cover	1
14	Bevel gear box	1	48	Cross recessed pan head tapping screw	5
15	Spring washer	2	49	Right motor housing	1
16	Hexagon socket cap screw	2	50	label	1
17	Bevel pinion	1	51	Spline shaft connecting bushing	1
18	Deep groove ball bearing	2	52	Special-shafted circlip	2
19	Circlips for hole	1	53	Output shaft	1
20	Circlip for shaft	1	54	Woodruff key	2
21	Rubber bearing	6	55	Cross recessed pan head tapping screw	4
22	Hexagon socket cap screw	2	56	Cap of gear box	1
23	Flat washer	2	57	Deep groove ball bearing	1
24	Spring washer	2	58	Circlip for shaft	2
25	Down cover of handle fixing bracket	1	59	Big bevel wheel	1
26	Handle fixing bracket	1	60	Small bevel wheel	1
27	Top cover of handle fixing bracket	1	61	Cross recessed pan head tapping screw	2
28	Flat washer	4	62	Spring washer	2
29	Spring washer	4	63	Cross recessed pan head screw	2
30	Hexagon socket cap screw	4	64	Circlip for hole	1
31	Rubber coil	2	65	Circlip for shaft	1
32	Aluminium tube	1	66	Deep groove ball bearing	1
33	cross recessed pan head tapping screw	2	67	Rubber block	1
34	pressing line plate	1	68	Front bracket of motor	1
35	Handle grip	1	69	Stator	1

70	Deep groove ball bearing	1	98	Nylon locknut	2
71	rotor	1	99	Fixing plate	1
72	Deep groove ball bearing	1	100	Hexagon socket cap screw	1
73	Rear bracket of motor	1	101	Hexagon socket cap bolt	4
74	Carbon brush	2	102	Hexagon socket cap bolt	2
75	Cross recessed pan head tapping screw	2	103	Safety guard	1
76	Brush carrier	2	104	blade	1
77	Power cord	1	105	Cross recessed pan head tapping screw	3
78	Power cord sheath	1	106	Shoulder strap	1
79	Lock nut	1	107	Allen key	1
80	Fan blade	1	108	Bump to feed line	1
81	Shaft sleeve	1	109	Socket wrench	1
82	Left motor housing	1			
83	capacitance	1			
84	Soft start	1			
85	Pressing plate	1			
86	Cross recessed pan head tapping screw	2			
87	Rubber washer of stator	2			
88	Left cover	1			
89	label	1			
90	Drive shaft	1			
91	Aluminium tube	1			
92	Hexagon socket cap screw	1			
93	Fixing buckle	1			
94	Shoulder strap fixing bracket	1			
95	Nylon locknut	1			
96	Nylon locknut	4			
97	Safety guard fixing bracket	1			

