

ECKMAN

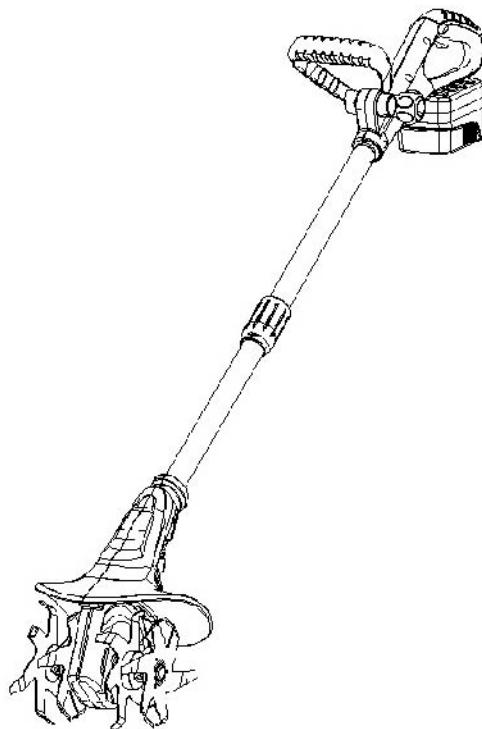
Practical Solutions for the Garden

RECHARGEABLE 18V LI-ION MINI

CULTIVATOR

MODEL:EKLMC1

INSTRUCTION MANUAL



Please read these instructions carefully and make sure you understand them before using the electric telescopic hedge trimmer and branch lopper set

PLEASE READ AND SAVE THESE INSTRUCTIONS FOR FURTHER REFERENCE!

ANY QUESTIONS OR PROBLEMS? Please call the ECKMAN Helpline on: 0844 441 3011 or go to www.ECKMAN.co.uk

Contents

I. Technical Data.....	3
II. Intended Use.....	4
III. Explanation of Symbols on your product.....	4
IV. Safety Instructions.....	4-7
V. Part Identification.....	8
VI. Assembly.....	8-13
VII. GUARANTEE.....	13

I. Technical Data:

Model	EKLMC1
Manufactured from	Aluminium (handle) & ABS
Voltage	18VDC
No load speed	280rpm /min
Max. Working width(mm):	200mm
Max. Working depth(mm):	80mm
Battery type	Lithium-ion
Charging time	3-5 hrs
Battery capacity	1.3Ah
Working Time	25-min
Battery charging time	Approx. 4 hours
Weight inc. battery	3.68KGS
Overall length	132CM
Safety & approvals	Double safety switching / CE

IMPORTANT!

It is vital that you read and understand how to get the best performance from this equipment.

This is dependant on charging your battery correctly. Please follow instructions on pages 10 & 11 carefully

II.Intended Use

Your 18V Li-ion battery rotary mini tiller has been designed for light use around garden borders and flower beds.. Do not use for any other purpose. This tool is intended for domestic use only. Your charger has been designed for charging batteries of the type supplied with this tool. Do not use to charge other batteries.

III. Explanation Of Symbols On Your Product



- Warning!



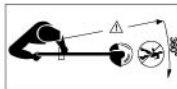
- Do not use in rain or wet conditions.



- Read the instruction manual before use



- Always wear eye protection.



-Keep bystanders away

IV. Safety Instructions



If not used properly this product can be dangerous. The warnings and safety instructions must be

followed to ensure reasonable safety and efficiency in using this product. The operator is responsible for following the warnings and instructions in this manual and on the product. Never use the product unless the guards provided by the manufacturer are in the correct position.



For safety reasons, children under the age of 16 and people not familiar with these operating instructions must not use this 18V Li-ion mini cultivator. Persons with reduced physical or mental abilities may use the 18V Li-ion mini cultivator only if they are supervised or instructed by a responsible person.

General Power Tool Safety Warnings



WARNING ! Read all safety warnings and all instructions. Failure to follow the warnings and instructions may result in electric shock, fire and /or serious injury.

Save all warnings and instructions for future reference.

The term “power tool” in the warnings refers to your mains operated (corded) power tool or battery operated (cordless) power tool.

Warning! Carefully observe the instructions in this manual to reduce the risk of personal injury or material damage.

- Read all of this manual carefully before operating the machine.
- Before operating the machine , make sure that you know how to switch the machine off in an emergency .
- Retain this manual for future reference .

1) Work area

- a) Keep work area clean and well lit. Cluttered and dark areas invite injuries.
- b) Do not operate power tools in explosive atmospheres, such as in the presence of flammable liquids, gases or dust. Power tools create sparks which may ignite the dust or fumes.
- c) Keep children and bystanders away while operating a power tool. Distractions can cause you to lose control.

2) Electrical safety

- a) Avoid body contact with earthed or grounded surfaces. There is an increased risk of electric shock if your body is earthed or grounded.
- b) Do not expose power tools to rain or wet conditions. Water entering a power tool will increase the risk of electric shock.

3) Personal safety

- a) Stay alert, watch what you are doing and use common sense when operating a power tool. Do not use a power tool while your tired or under the influence of drugs, alcohol or medication. A moment of inattention while operating power tools may result in serious personal injury.
- b) Use safety equipment. Always wear CE-approved eye protection. Safety equipment such as dust mask, non-skid safety shoes, hard hat, or hearing protection used for appropriate conditions will reduce personal injuries.
- c) Avoid accidental starting. Ensure the switch is in the off position before connecting battery pack, picking up or

carrying the machine. Carrying power tools with your finger on the switch or energising power tools that have the switch on invites accidents.

d) Remove any adjusting key or wrench before turning the power tool on. A wrench or a key left attached to a rotating part of the power tool may result in personal injury.

e) Do not overreach. Keep proper footing and balance at all times. This enables better control of the power tool in unexpected situations.

f) Dress properly. Do not wear loose clothing or jewellery. Keep your hair, clothing and gloves away from moving parts. Loose clothes, jewellery or long hair can be caught in moving parts.

g) If devices are provided for the connection of dust extraction and collection facilities, ensure these are connected and properly used. Use of these devices can reduce dust related hazards.

4) Power tools use and care

a) Do not force the power tool. Use the correct power tool for your application. The correct power tool will do the job better and safer at the rate for which it was designed.

b) Do not use the power tool if the switch does not turn it on and off. Any power tool that cannot be controlled with the switch is dangerous and must be repaired.

c) Remove the battery pack from the power tool before making any adjustments, changing accessories, cleaning or storing. Such preventive safety measures reduce the risk of starting the power tool accidentally.

d) Store idle power tools out of the reach of children and do not allow persons unfamiliar with the power tool or these instructions to operate the equipment. Power tools are dangerous in the hands of untrained users.

e) Maintain your equipment. Check for misalignment or binding of moving parts, breakage of parts and any other condition that may affect the operation. If damaged, have the equipment repaired before use. Many accidents are caused by poor maintenance.

f) Keep cutting tools sharp and clean. Properly maintained cutting tools with sharp cutting edges are less likely to bind and are easier to control.

g) Use the power tool, accessories and tool bits etc., in accordance with instructions and in the manner intended for the particular type of power tool, taking into account the working conditions and the work to be performed. Use of the power tool for operations different from intended could result in a hazardous situation.

5) Battery tool use and care.

a) Ensure the switch is in the off position before inserting battery pack. Inserting the battery pack into power tools that have the switch on invites accidents.

b) Recharge only with the charger specified by the manufacturer. A charger that is suitable for one type of battery pack may create a risk of fire when used with another battery pack.

c) Use power tools only with specifically designated battery packs. Use of any other battery packs may create a risk of injury and fire.

d) When battery pack is not in use, keep it away from other metal objects like paper clips, coins, keys, nails, screws, or other small metal objects that can make a connection from one terminal to another. Shorting the battery terminals together may cause burns or a fire.

e) If damaged, liquid may be ejected from the battery; avoid contact. If contact accidentally occurs, flush with water. If liquid contacts eyes, additionally seek medical help. Liquid ejected from the battery may cause irritation or burns.

6) Service

a) Have your power tool serviced by a qualified repair person using only identical replacement parts. This will ensure that the safety of the power tool is maintained.

Additional Safety Instructions For Batteries And Chargers

Batteries

- Never attempt to open for any reason
- Do not expose to water
- Do not incinerate the battery even if it is severely damaged or is completely worn out. The battery pack can explode in a fire.
- Do not store in locations where the temperature may exceed 40°C (eg, in direct sunlight inside a window).
- Do not leave the battery pack in the charger when the charging is finished, otherwise battery leakage may occur.
- Charge only at room temperature.
- Charge only at using the charger provided with the machine.
- Before charging , make sure that the battery is dry and clean.
- Use only the correct type of battery for the machine.
- When disposing of batteries follow the instructions given in the section "protecting the environment".
- Under extreme conditions ,battery leakage may occur .When you notice liquid on the battery , proceed as follows:
 - Carefully wipe the liquid off using a cloth. Avoid skin contact.
 - In case of skin or eye contact, follow the instructions below.

The battery fluid, a 25-30% solution of potassium hydroxide, can be harmful. In case of skin contact, immediately rinse with water. Neutralize with a mild acid such as lemon juice or vinegar. In case of eye contact, rinse abundantly with clean water for at least 10 minutes. Consult a physician.

Chargers

- The charger's plug must match the outlet. Never modify the plug in any way. Modified plugs can be a fire hazard and kill.
- Use your charger only to charge batteries of the type supplied with your machine. Other batteries could burst, causing personal injury and damage.
- Only 2 batteries are allowed to be charged continuously in order to prevent overheating of charge. It is necessary for the charger to rest and cool down before further charging.
- When charging is finished, unplug the charger from mains socket outlet and remove the battery pack from the charger. Do not leave the battery pack in the charger.
- Never carry the charger by its cord or pull it to disconnect it from the socket. Keep the cord away from heat , oil and sharp edges .
- Never attempt to charge non-rechargeable batteries.
- The charger lead is not replaceable. Do not continue to use if the lead is damaged.
- Do not expose to water or rain. Do not use in wet conditions.
- Do not open the charger.
- Do not probe the charger.
- Intended for indoor use only

V. PART IDENTIFICATION

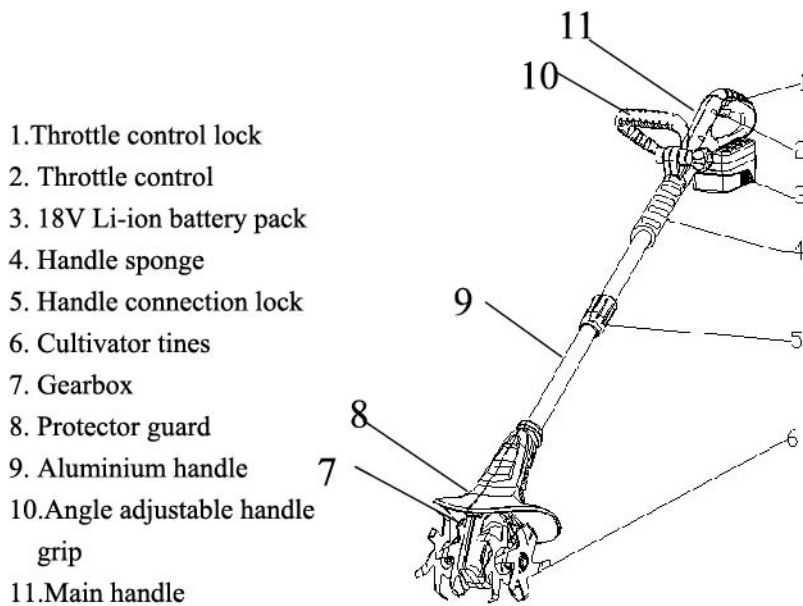


FIG A

VI. ASSEMBLY INSTRUCTIONS

For Your Safety

⚠ Warning! Remove the battery pack before cleaning .

1.Inserting/Removal Of The Battery Pack

- a. Always release the On/Off switch before insertion or removal of the battery pack.
- b. To remove the battery pack, depress the button 1 in the end of the battery pack, and then remove the pack 2

from the tool. See FIG B.

- c. To insert the battery pack, submit both sides of the battery cartridge with the groove in the housing and slip it into place. Insert it completely until it locks in place with a little click. If not, it may accidentally fall out of the tool, causing injury to you or someone around you. See FIG B

Do not use force when inserting the battery pack. If the cartridge does not slide in completely, it is not being inserted correctly.

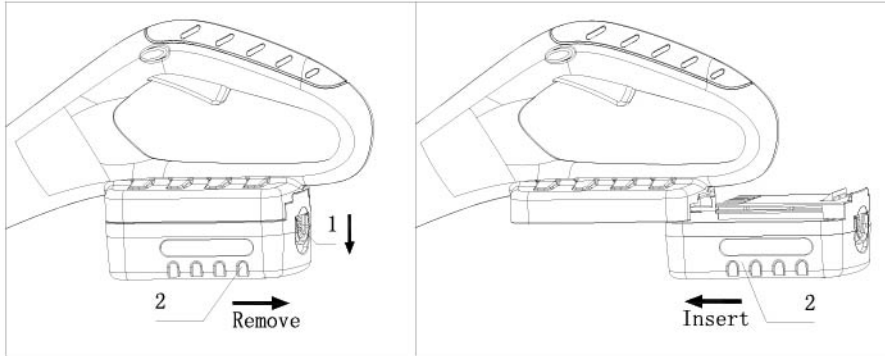


FIG B

2. Attaching The Adjustable Handle

- a. Remove the bolt and tightening knob from the adjustable handle.
- b. Insert the adjustable handle grip onto the machine handle as per FIG C below .
- c. Insert the bolt and loosely screw on the knob.
- d. Before tightening completely, turn the adjustable handle in desired angle. When the handle is adjusted to the most comfortable angle, tighten the knob securely. See FIG C. The handle can be adjusted and locked in seven positions (see FIG D).

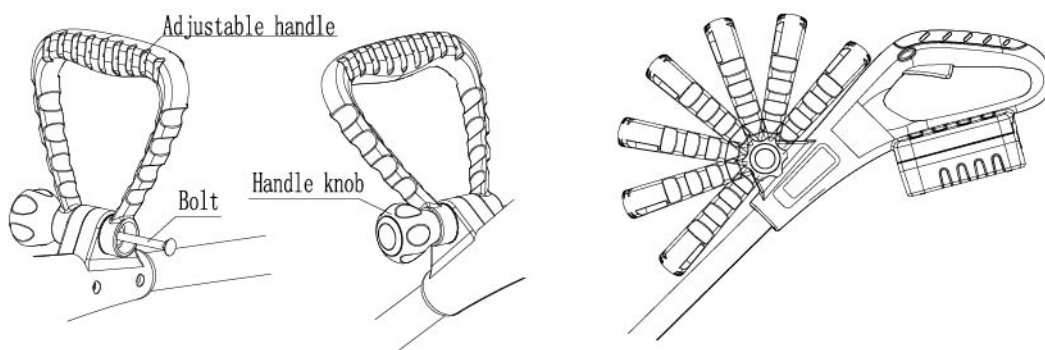


FIG C

FIG D

3. Connecting Both Parts Of The Pole Together .

1. Line up both arrows (1 & 2) on each pole with one another and insert one pole into the other as shown in FIG E.
2. Turn the locking knob in the "LOCK" direction and tighten completely. Take care not to cross-thread as this will damage the pole connections. See Fig F.

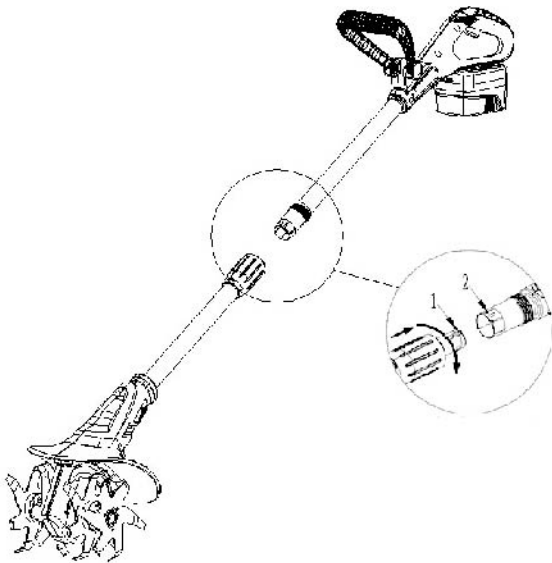


FIG E



FIG F

4.Starting The 18V Li-ion Mini Cultivator :

Switching the cultivator ON/OFF Throttle control lock button at “ON “position :

- 1, Press and hold the safety lock-off button (A) and then press the start throttle lever control button (B) on the handle.
- 2, Release the safety lock-off button (A) again.

Switching the cultivator ON/OFF Throttle control lock button at “OFF “position : Release the start throttle lever control button (B) on the handle. See FIG G



RISK OF INJURY! Tines continue to rotate after the motor is switched off. Do not try to stop the tines using your hands. Always allow the tines to come to a stop by themselves.

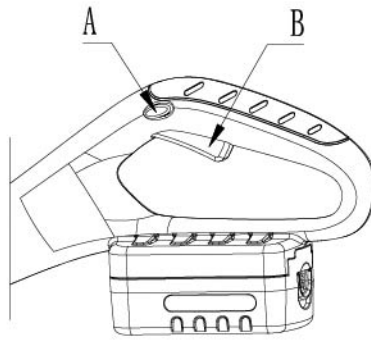


FIG G

5. Battery Charging

- The charger includes a charger station .(See Fig H)
- Do not use other battery chargers. The battery charger supplied is designed for especially for the Lithium-ion battery supplied with your machine.

Observe correct mains voltage: The voltage of the power supply must the same as the voltage specified on the nameplate of the unit. Equipment marked with 230 V can also be connected to 220 V or 240 V. 230V is the European harmonized 'norm'.

The Li-ion battery is protected against deep discharging by "Electronic Cell Protection". When the battery is empty, the machine is switched off by means of a protective circuit: **WARNING:** Do not continue to try and operate the machine once it has automatically switched off. The battery can be damaged.

The battery is supplied partially charged. To ensure full capacity of the battery, completely charge the battery before using your power tool for the first time. **A battery that is new or has not been used for a long period does not develop its full capacity until after approx. 5 charging/discharging cycles.**

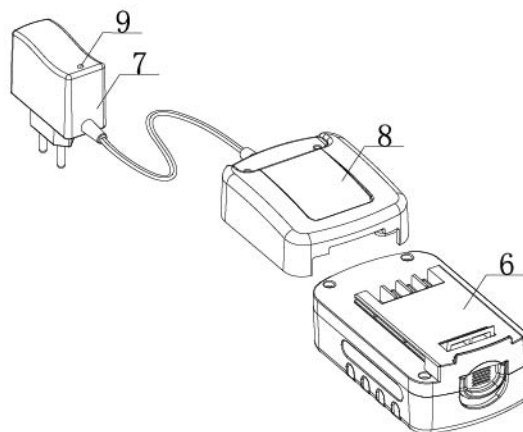


Fig H

- (1) Connect the charger 7 to the charger station 8.
- (2). Plug the charger into an appropriate AC power outlet. (The LED (9) lights green to tell you that the charger is ready for use.)
- (3) Insert the charger station 8 into the battery pack 6, as shown in Fig H, making sure the charger station is fully seated in the battery pack. The LED 9 lights red to tell you that the battery pack is on charge.

Attention! You cannot charge a flat battery immediately after using the machine. The battery pack must be allowed to cool for a period of time. When the LED (9) lights from green to red means it can be charged.

(4).The battery pack will be fully charged in about 4 hours. And the LED 9 lights green again to tell you that the battery pack is fully charged.

Important charging notes

Longest life and best performance can be obtained if the battery pack is charged when the air temperature is between 18-24°C. Do not charge the battery pack in a very low or very high air temperature. This is important and will prevent serious damage to the battery pack.

1. When using your tool continuously, the batteries in your battery pack will become hot. You should let a hot battery pack cool down for approximately 30 minutes before attempting to recharge.

2. The charger and battery pack may become warm to the touch while charging. This is a normal and does not indicate a problem.

3. Use the charger in normal room temperatures whenever possible. To prevent overheating, do not cover the charger and do not charge battery packs in direct sunlight or near heat sources.

4. If the battery pack does not charge properly – (1).check current at receptacle by plugging in a lamp or other appliance. (2) move charger and battery pack to a location where the surrounding air temperature is approximately 18-24°C. (3).if charging problems persist, take or send the battery pack and charger to your local service centre.

5. The battery pack should be recharged when it fails to produce sufficient power on jobs which were easily done previously. DO NOT CONTINUE to use under these conditions. Follow the charging procedure. You may also charge a partially used pack whenever you desire with no adverse affect on the battery.

6. Under certain conditions, with the charger plugged in to the power supply, the exposed charging contacts inside the charger can be shorted by foreign material. Foreign materials of a conductive nature such as, (but not limited to) steel wool, aluminum foil, or any buildup of metallic particles should be kept away from charger cavities. Always unplug the charger from the power supply when there is no battery being charged. Unplug charger before attempting to clean.

7. Do not immerse charger in water or any other liquid.

8. **WARNING!** Don't allow any liquid to get inside charger as this will result in an electric shock. To assist the battery cooling down after use, avoid recharging the battery in a hot environment such as in a metal shed, or in strong direct sunshine .

9. **CAUTION!** Never attempt to open the battery pack for any reason. If the plastic housing of the battery pack breaks or cracks, recycle. Do not attempt to re-use.

➤ **Protect the battery charger against moisture!**

6. Cleaning, Maintenance & Ordering Spare Parts

Always remove the Li-ion battery before starting any cleaning work.

6.1 Cleaning

Keep all safety devices, air vents and the motor housing free of dirt and dust as far as possible. Wipe the equipment with a clean cloth and vacuum air vents. We recommend that you clean the equipment immediately after you use it. Clean the equipment regularly with a damp cloth and some soft soap. Do not use cleaning agents or solvents; these may be aggressive to the plastic parts in the equipment. Ensure that no water can get into the interior of the equipment. Clean the underside of the tines guard with a brush to remove any dirt that has adhered. .

6.2 Servicing

There are no parts inside the equipment which require additional maintenance.

7. Storage

Store the equipment and accessories out of the reach of children and in a dark dry place at above freezing temperature. The ideal storage temperature is between 5 and 30 °C.

8. Disposal and recycling

The equipment is supplied in packaging to prevent it from being damaged in transit. The raw materials in this packaging can be re-used or recycled. The equipment and its accessories are made of various types of material, such as metal and plastic. Defective components must be disposed of as special waste. Consult your local council.



For EU countries only

Never place any electric tools in your household refuse.

To comply with European Directive 2006/42/EC concerning old electric and electronic equipment and its implementation in national laws, old electric tools have to be separated from other waste and disposed of in an environment-friendly fashion, e.g. by taking to a recycling depot.

VII. GUARANTEE:

This product is guaranteed for a period of 12 months from date of purchase. Any modification or misuse of this machine will invalidate your guarantee. Your statutory rights remain unaffected.

EC DECLARATION OF CONFORMITY

The undersigned, as authorised by: Ningbo East Tools Co., Ltd.

Declares that the following equipment manufactured by Ningbo East Tools Co., Ltd.

has been tested and conforms to the Directive: -

EN 55014-1:2006+A1+A2

EN 55014-2:1997+A1+A2

of the European Parliament and of the council on the approximation of the laws of the Member States relating to the noise emission in the environment by equipment for use outdoors.

Equipment Category - (As defined in the Directive)

Product Name: RECHARGEABLE 18V LI-ION MINI CULTIVATOR

Model: ET1401 (ECKMAN MODEL NO.: EKLMC1)

Description: 18V

The technical documentation is kept by: Ningbo East Tools Co., Ltd.

Add: No.307, East Buzheng Rd, Wangchun Industrial Zone, Yinzhou section, Ningbo, China

The conformity assessment procedure followed was in according with annex (EN 55014-1:2006+A1+A2; EN 55014-2:1997+A1+A2) of the Directive.

A copy of this certificate has been submitted to the European Commission and to EU Member State: the United Kingdom

Place of Declaration: NINGBO, 315000, P.R. China

Date: September 30, 2015

Signed by:

Position in Company: GENERAL MANAGER

Name and address of manufacturer or Authorised representative: Ningbo East Tools Co., Ltd.

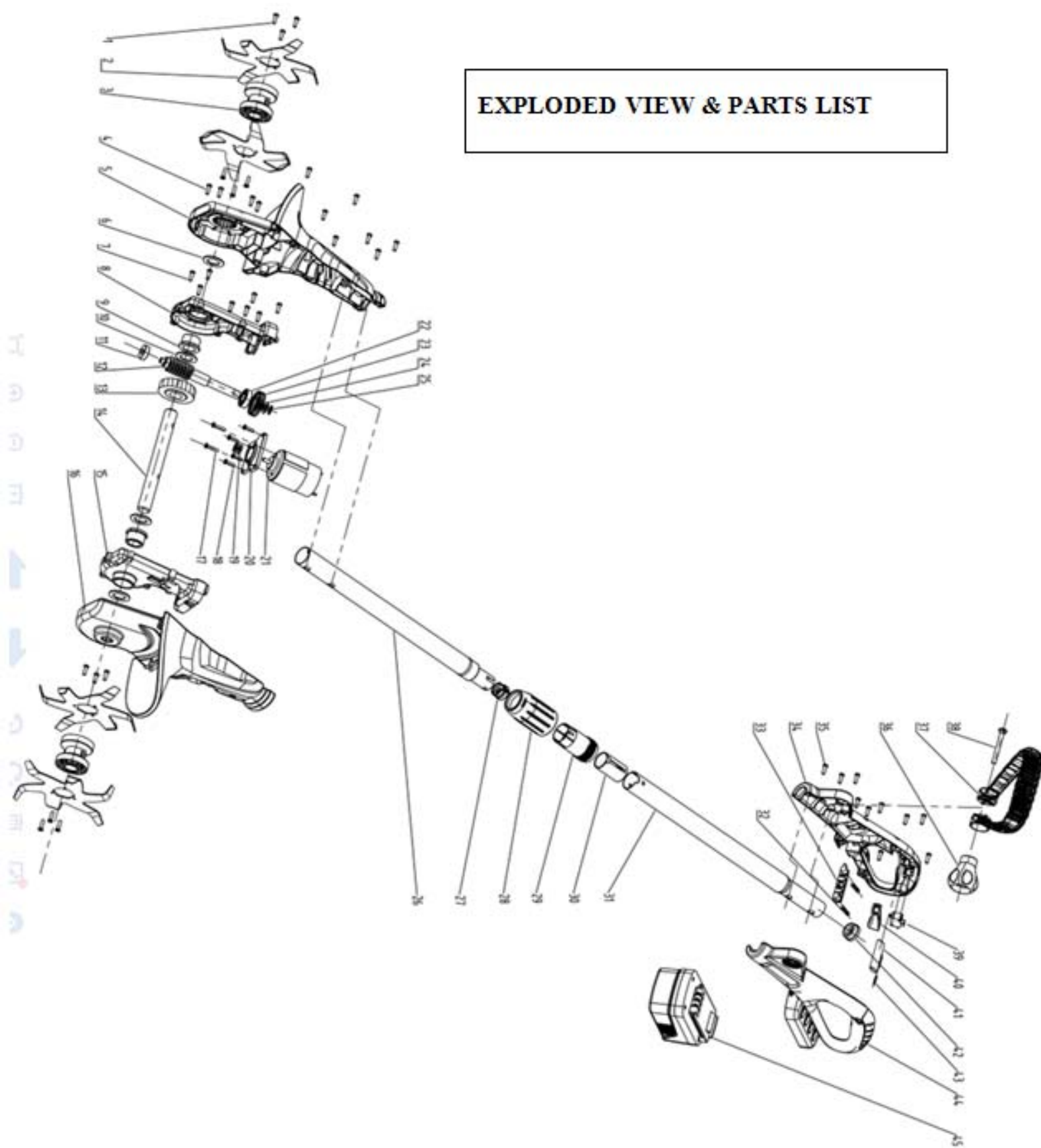
Add: No.307, East Buzheng Rd, Wangchun Industrial Zone, Yinzhou section, Ningbo, China

IMPORTED BY ECKMAN CO., LTD

ADD: 29 WELBECK STREET, LONDON W1G 8DA, ENGLAND



EXPLODED VIEW & PARTS LIST



NO	NAME	NO	NAME
1	Screw	24	SHIMS
2	Blade	25	Extrmal Retaining Ring
3	Dead Plate	26	Back Pipe
4	Screw	27	Pinboard Buckle
5	Left Chassis	28	Locknut
6	Dustproof Piece	29	Collet
7	Screw	30	Buckle
8	Top Gear Cover	21	TOP Pipe
9	Axle Sleeve	32	Spring
10	Shim	33	Pin
11	Bearing	34	Left Handle
12	Worm	35	Screw
13	Worm Gear	36	Knob
14	Axle	37	Auxiliary Handle
15	Back Gear Cover	38	Bolt
16	Right Chassis	39	Switch
17	Screw	40	Trigger
18	Screw	41	Switch Lockout
19	Gear	42	Cable Jacket
20	motor fixing plate	43	Spring
21	Motor	44	Right Handle
22	Bearing	45	Battery Pack
23	Gear		