

ECKMAN

ELITE

PROFESSIONAL 4-STROKE BRUSH CUTTER/LINE TRIMMER

INSTRUCTION MANUAL

MODEL EKPBCO4



IMPORTANT: Read and understand this manual before assembling or operating this machine. Improper use of this machine can cause severe injury or death. Keep this manual in a safe place for future reference.

ANY QUESTIONS OR PROBLEMS-Please Call the ECKMAN Helpline on: 0844 441 3011 or go to www.ECKMAN.co.uk

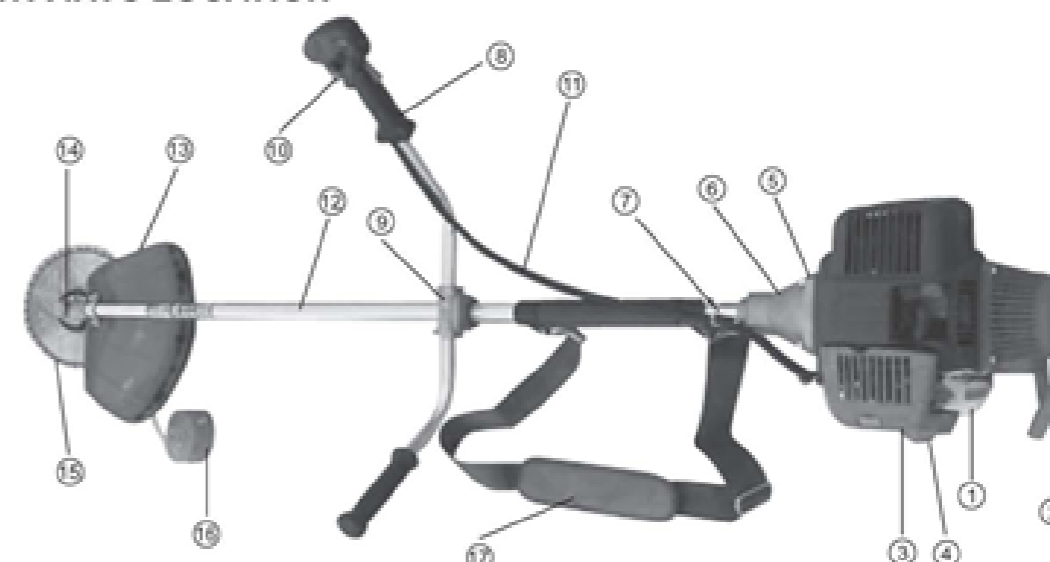
CE EU II



Contents

1. PARTS LOCATON	2
2. WARNING LABELS ON THE MACHINE	3
3. SYMBOLS ON THE MACHINE	3
4. SAFETY PRECAUTIONS	4
5. ASSEMBLY.....	8
6. FUEL	11
7. OPERATION	12
8. MAINTENANCE	14
9. SPECIFICATIONS	17
10. GUARANTEE	17

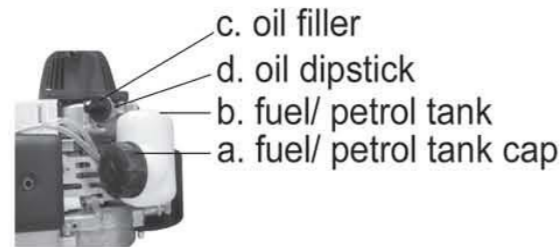
1. PARTS LOCATION



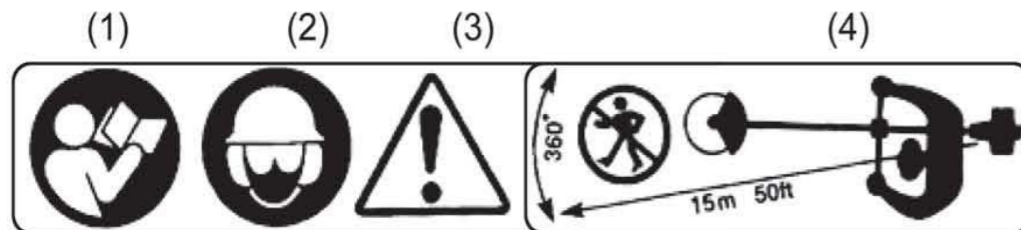
1. Petrol tank
2. Starter
3. Air cleaner
4. Engine stand
5. Transmission box mounting bolts
6. Transmission box mounting bolts
7. Shoulder strap mountings
8. Control handle
9. Handle bracket
10. Throttle control lever
11. Throttle cable
12. Outer shaft with inner drive shaft
13. Safety guard
14. Brush cutter/trimmer gear case

ANY QUESTIONS OR PROBLEMS-Please Call the ECKMAN Helpline on: 0844 441 3011 or go to www.ECKMAN.co.uk

15. 40 Tooth blade
16. Bump feed nylon cutter
17. Shoulder strap



2. WARNING LABELS ON THE MACHINE



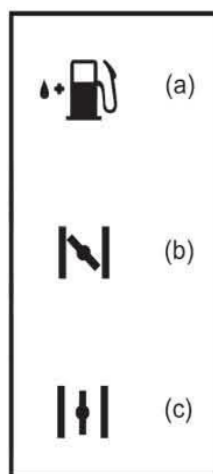
- (1) Read owner's manual before operating this machine
- (2) Wear head, eye and ear protection.
- (3) Warning/Attention.
- (4) Keep all children, bystanders and helpers 15 meters away from the brush cutter.

If warning seals peel off or become soiled and impossible to read, you should contact the dealer from which you purchased the product to order new seals and affix the new seal in the required location.

Never modify this machine.

Any modification to this machine will invalidate your warranty.

3. SYMBOLS ON THE MACHINE



For safe operation and maintenance, symbols are carved in relief on the machine.

(a). Put petrol here (use ONLY unleaded fuel).

Position: FUEL TANK CAP

(b). Cold Start (Choke On)

Position: AIR CLEANER COVER

(c). Warm Start/Run Position (Choke Off)

Position: AIR CLEANER COVER

4. SAFETY PRECAUTIONS

■ BEFORE USING THE MACHINE



a. Read this owner's manual carefully to understand how to operate this machine safely and efficiently.

b. This machine has been designed for trimming brush grass and weeds and should never be used for any other purpose.



c. You should never use this machine when under the influence of alcohol, when suffering from exhaustion or lack of sleep when suffering from drowsiness as a result of having taken medicine, or at any other time when a possibility exists that your

judgment might be impaired or that you might not be able to operate the brush cutter properly and in a safe manner.



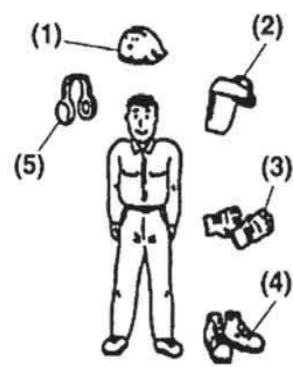
d. Avoid running the engine indoors. Exhaust gases contain harmful carbon monoxide.

e. Never use your machine under circumstances like those described below:

1. When the ground is slippery or when other conditions exist which might make it difficult to maintain a steady posture.
2. At any other times when your field of vision might be limited.
3. During rain or lightning storms, in gale-force winds.
- f. When using this product for the first time, before beginning actual work, whenever possible, take advice from someone with experience.
- g. Lack of sleep, tiredness, or physical exhaustion results in lower attention spans, and this in turn leads to accidents and injury. Limit the amount of time over which the machine is to be used continuously to somewhere around 30~40 minutes per session, and take 10~20 minutes of rest between work sessions. Also try to keep the total amount of work performed in a single day under 2 hours or less.
- h. Be sure to keep this manual handy so that you may refer to it later whenever any questions arise.
- i. Always be sure to include this manual when selling, lending, or otherwise transferring the ownership of this product.
- j. Never allow children or anyone unable to fully understand the directions given in this manual to use this machine.



■ WORKING GEAR AND CLOTHING



A. When using your brush cutter, you should wear proper clothing and protective equipment as follows.

- (1) Helmet
- (2) Protection for your eyes
- (3) Good quality gloves
- (4) Good quality non-slip shoes
- (5) Ear protectors

- B. Never wear loose clothing as this can get tangled in the machine and cause severe injury.
- C. Take a mobile phone with you, a drink (water), some spare fuel and tools (provided).

■ WARNING WHEN HANDLING FUEL



- a. This engine is designed to run on unleaded petrol. Never store cans of fuel or refill the fuel tank in any place where there is a boiler, stove, wood fire, electrical sparks, welding sparks, or any other source of heat or fire which might ignite the fuel.
- b. Smoking while operating the brush cutter or refilling its fuel tank is extremely dangerous. Please refrain from smoking.
- c. When refilling the tank always turn the engine off first and take a careful look around to make sure that there are no sparks or open flames anywhere nearby.
- d. If any fuel spillage occurs during refueling, use a dry rag to wipe up spills before turning the engine back on again.
- e. After refueling, screw the fuel cap back tightly onto the fuel tank and then carry the brush cutter to a spot 3m or more away from where it was refueled before turning on the engine.

■ THINGS TO CHECK BEFORE USING YOUR BRUSHCUTTER

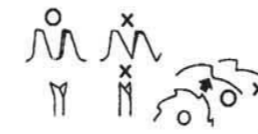
- a. Before beginning work, look around carefully to get a feel for the shape of the land, or grass to be trimmed and whether or not there are any obstacles which might get in the way while working. Remove any obstacles.
- b. The area within a perimeter of 15m of the person using the brush cutter

should be considered a hazardous area into which no one should enter while the brush cutter is in use, and when necessary, a yellow warning rope/ warning signs should be placed around the work area. When work is



to be performed simultaneously by two or more persons always check the presence and locations of others so as to maintain a distance between each person sufficient to ensure safety.

- c. Make sure that there are no loose screws or bolts, fuel leaks, ruptured dents, or any other problems, which might interfere with safe operation. Be especially careful to check that there is nothing wrong with the blades or with the joints by which the blades are attached to the brush cutter.



- d. Never use blades that are bent, warped, cracked, broken or damaged in any way.
- e. Always keep the blade sharp.
- f. Check the bolt to fasten the blade is fully tightened and make sure the blade turns smoothly without any abnormal noise.



■ NOTES ON STARTING THE ENGINE

- 1. Take a careful look around to make sure that no obstacles exist within a perimeter of 15m or less around brush cutter.
- 2. Place the body of the brush cutter onto the ground in a flat clear area and hold it firmly in place so as to ensure that neither blades nor the throttle come in contact with any obstacles when the engine starts up.
- 3. Place the throttle into the idling position when starting the engine.
- 4. The engine has been adjusted at the factory so that when starting and when in its idle position, the blade does not turn. Should the blade turn when starting or idling, check the throttle cable is not snagged. If not snagged, adjust the idling screw as shown on Page 16.



■ KICKBACK SAFETY PRECAUTIONS

- ✧ Contacting a solid object or obstruction is extremely dangerous and will cause Kick Back reaction causing the operator to lose control of the unit which can result serious or fatal injury. Avoid kickback at all times by observing the safety precautions below.

1. Before beginning work, clear your working area of any obstacles.
2. Keep a firm grip on both handles.
3. Do not let the blade or trimmer get too close to your feet. Do not raise the machine above waist height.

■ NOTES ON TRANSPORTATION

1. Make sure the appropriate blade cover is in place
2. When transporting by car, fix the unit firmly using a rope. Do not transport by bicycle or motorcycle because it is dangerous.
3. Never transport the brush cutter over rough roads over long distances without first removing all fuel from the fuel tank, as doing so might cause fuel to leak from the tank.

■ OPERATION SAFETY PRECAUTIONS

1. Grip the handles of the brush cutter firmly with both hands. When you take a rest, stop the machine.
2. Always be sure to maintain a steady, even posture while working.
3. Maintain the speed of the engine at the level required to perform cutting work, and never raise the speed of the engine above the level necessary.
4. If the grass gets caught in the blade during operation, or if you need to check the unit or refuel the tank, always be sure to turn off the engine.
5. If the blade touches a hard object like a stone, immediately stop the engine and check if something is wrong with the blade. If so, replace the blade with new one.
6. If someone calls out while working, always be sure to turn off the engine before turning around.



7. Never touch the spark plug or plug cord while the engine is in operation as this may result in being subjected to an electrical shock.
8. Never touch the silencer, spark plug, or other metallic parts of the engine while the engine is in operation or immediately after shutting down the engine as this may result in serious burns.
9. When you finish cutting in one location and wish to continue work in another spot, turn off the engine prior to moving location.



■ MAINTENANCE SAFETY PRECAUTION

1. Perform the maintenance and checking operations described in this manual at regular intervals. If any parts must be replaced or any maintenance or repair work not described in this manual must be performed, please contact the Eckman Helpline.
2. Under no circumstances should you ever take apart the brush cutter or alter it in any way. Doing so might result in the brush cutter becoming damaged during operation or the brush cutter becoming unable to operate properly. Any modification of this machine is dangerous and will invalidate your guarantee.
3. Always be sure to turn off the engine before performing any maintenance or checking procedures.
4. When sharpening, removing, or re-attaching the blade, be sure to wear sturdy gloves and use only proper tools and equipment to prevent injury.
5. When replacing blade or any other parts, always be sure to use only ECKMAN original products.

5. ASSEMBLY

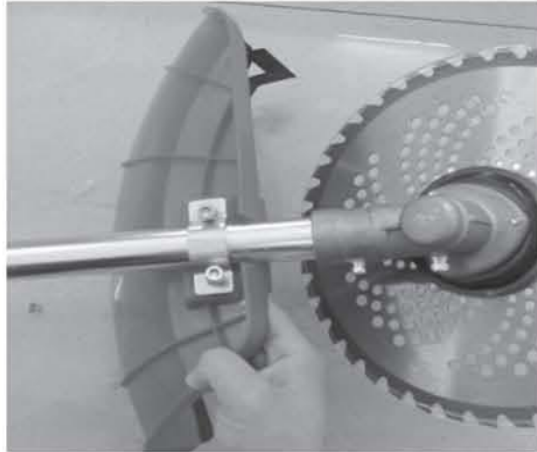
THE HANDLE

1. Loosen the 4 bolts on the handle bracket.
2. Insert the right handle (throttle lever is attached) and the left handle assembly into the bracket and retighten the bolts securely.



THE SAFETY GUARD

1. Slide the chromed metal guard holder already affixed to the shaft into the recess on the plastic guard.
2. Line up the four holes. Fix and tighten the four bolts using the spanner and hex-hex supplied.



THE METAL BLADE

1. Loosen the blade retainer nut clockwise and remove the blade retainer.
2. You'll need to line up the two holes in the side of the cutting head assembly and insert the hex key in them to keep the blade still.



Put the bush and the blade seat onto the end of the shaft , then the metal blade into the seat.



Fit the domed cover, then the securing nut and tighten the nut anti-clockwise.



THE NYLON CUTTER (OPTION)

If you use the unit as a grass trimmer follow the instructions below:

1. Loosen the blade retainer nut clockwise and remove the blade retainer.
2. Fit the line cutting head on to the end of the shaft and tighten the cutting head.



NOTE: Please store the blade retainer and nut in a safe place.

THE SHOULDER STRAP

1. Clip the belt hook to the hanging rings on shaft tube.
2. Adjust the length of the belt in order to obtain the most comfortable working position.

6.FUEL

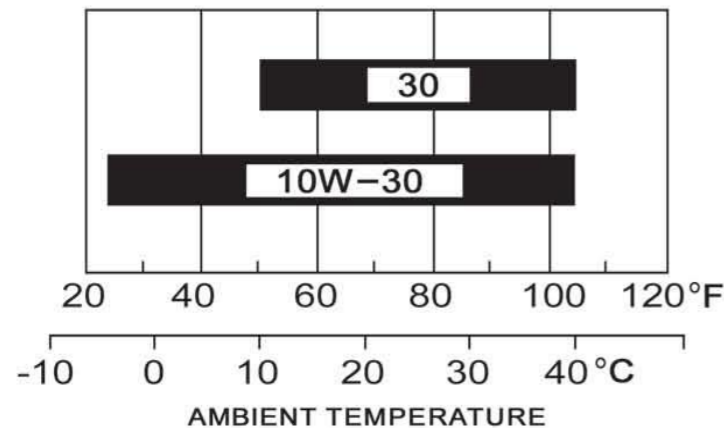


- ✧ **Petrol is very flammable. Avoid smoking or bringing any flame or sparks near fuel.** Use only Unleaded petrol
- ✧ **Wipe up all spills before starting the engine.**
- ✧ **Make sure to stop the engine and allow it cool before refueling the unit.**

OIL

Oil is major factor affecting performance and service life. Use 4-stroke automotive detergent oil.

SAE 10W-30 is recommended for general use. Other viscosities shown in the chart may be used when the average temperature in your area is within the recommended range.

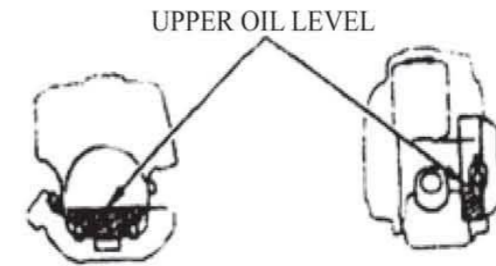


Running the engine with insufficient oil can cause serious engine damage. This is not covered by your warranty!

Be sure to check the engine on a level surface with the engine stopped and cold.

- Place the engine with the fuel tank side downward and horizontally on a level surface.
- Remove the oil filler cap and check the oil level: it should reach the top of the oil filler neck.
- If the level is low, fill to the top of the oil filler neck with the recommended oil.

- After every 10 hours of continuous use, check the engine oil level and replenish as required.



7. OPERATION

■ STARTING THE ENGINE

Before starting the engine, inspect the entire unit for any loose fittings or fuel leaks, and that the cutting attachment is properly installed and securely fastened.

Place the unit on a flat, firm place. Keep the cutting head clear of the ground and everything around it .

- Place the ignition switch to the on position marked
- Place the choke lever upwards to the cold start position (cold start).
(Note: This is not required if the engine is already warm.)
- Push the primer button 8 times until the petrol flows in and out of the discharge hose located above the fuel tank.



- Pull the recoil starter 2-3 times until you hear the engine starting.



5. Push the choke lever down to the run position.
6. The engine may start, or it may be required to pull on the recoil starter until the engine starts.
7. Allow the engine to run idle for around 10 seconds to let it warm up.
8. To engage the drive, squeeze the safety lever and throttle trigger.
9. Press the throttle trigger lock button for locking and squeeze the safety lever and throttle trigger for unlocking.



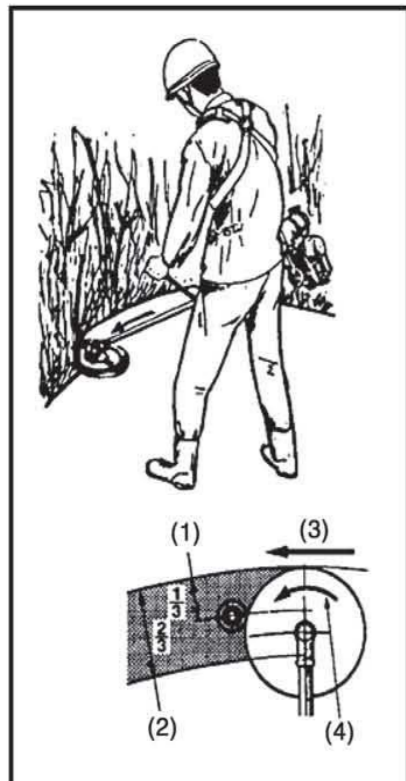
STOPPING THE ENGINE

1. Return the throttle lever to the idling position.

2. Place the ignition switch to the off position as marked



■ CUTTING OPERATION METAL BLADE USAGE



- ✧ Always cut by guiding the head from your right to left.
- ✧ A metal blade cuts best up to the point 1/3 from the edge. Use that area for cutting shrubs, tough and thick weeds. For cutting young grass, you can use up to 2/3 from the tip of blade or alternatively fit the nylon grass trimmer attachment.
- ✧ Adjust the engine speed according to what you are cutting. Cut young grass at middle speed, and cut shrubs or tough and thick weeds or bramble at high speed.

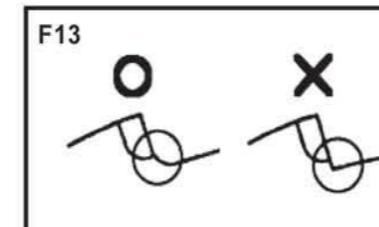
- (1) For branches and trees
- (2) For grass and weeds
- (3) Direction of cutting
- (4) Direction of rotation

Operating at low speed makes it easier for grass, weeds, or twigs to become caught up in the blades, and also it makes the shaft and clutch wear down more quickly.

NYLON CUTTER USAGE

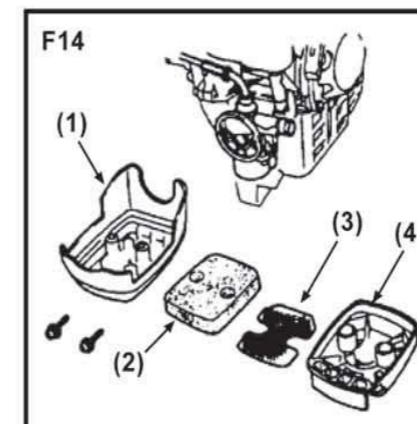
- ✧ Nylon cord consumes approximately 50% more power than when using a metal brush cutter blade..
- ✧ If the grass you want to trim is thick, start at the edges and work your way inwards. Do not attempt to cut too much in one go. Do not force the trimmer.

8. MAINTENANCE



■ BLADE

- ✧ Sharpen each cutting edge with a file and make sure the bottom corner is rounded.(F13)
- ✧ Do not cool the blade with water if using a grinder as this may cause cracks in the blade.



■ AIR CLEANER

Check and clean the filter element in warm, soapy water as required. Dry completely before installing. If the element is broken or shrunk, replace with a new one. (F14)

- (1) Cover
- (2) Element
- (3) Screen
- (4) Body

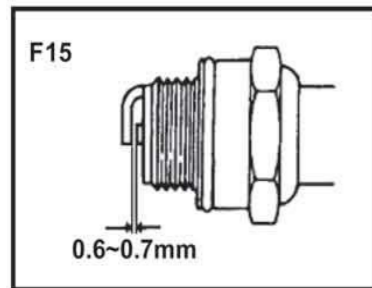
A clogged air filter will increase fuel consumption while cutting down the engine power.

Never operate the brush cutter without the air filter!

■ FUEL FILTER

Take the filter out of the fueling port using a small wire hook. Disconnect the filter assembly from the fuel pipe and unhook the retainer to disassemble it. Clean the components with neat petrol.

A clogged fuel filter may cause poor acceleration of the engine.

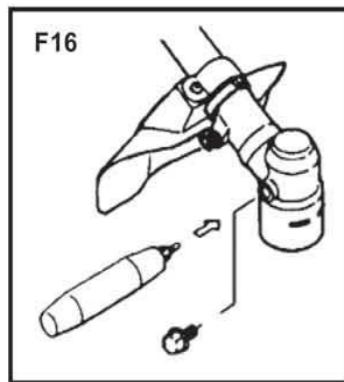


■ SPARK PLUG

- a. Remove and inspect the spark plug and clean the electrodes as necessary with brush.
- b. The spark gap should be adjusted to 0.6~0.7mm (0.024-0.028in) .
- c. Check the spark plug washer is in good condition and thread the spark plug in by hand to prevent cross-threading.
- d. After the spark plug is seated, tighten with a spark plug wrench to compress the washer.

■ INTAKE AIR COOLING VENT

- ✧ Check the intake air cooling vent and the area around the cylinder cooling fins, and remove any debris which has attached itself with a soft brush. Do not use water or chemicals.
- ✧ **Note:** failing to remove debris will cause the silencer to become overheated, which, in turn could cause the brush cutter to over-heat and catch on fire.



GEAR CASE

Top up with multi-purpose grease at every 25 hours of use.
Remove the cutter holders to remove old grease (F16). Failure to add lubrication will result in much faster wear and eventual failure !

■ SILENCER

1. Remove the silencer, insert a screwdriver into the vent and wipe away any carbon build up. Wipe away any carbon build up on the silencer exhaust vent at the same time.

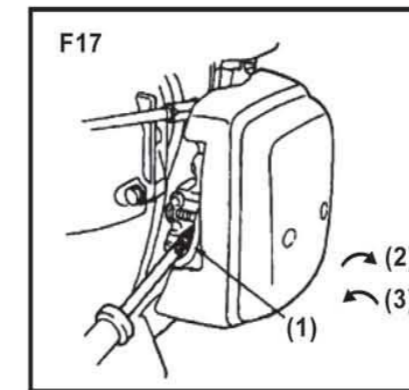
2. Tighten all screws, bolts, and fittings.
3. Check to see if any oil or grease has worked its way in between the clutch lining and drum , and if it has wipe it away using neat unleaded petrol.
4. Remove the float cabin of the carburetor and clean the inside.

■ ADJUSTING CARBURETOR

A wrong adjustment may cause damage to your unit. If the engine does not run well after adjusting the carburetor, please contact the Eckman helpline.

■ IDLE ADJUSTMENT SCREW(F17)

This is the screw to adjust the engine rotation when the throttle lever is set to the lowest speed position. If you turn the screw right (clockwise), rotation increases, and left (counterclockwise) it decreases. In case the blade continues to rotate or engine stops when you return the throttle lever completely to the original position, make readjustment.



- (1) Idle adjustment screw
- (2) High
- (3) Low

ENGINE COOLING FINS

Inspect the fin visually through the cover. If there are dry grass , leaves and mud clogged, contact the power equipment dealer for cleaning it.

MAINTENANCE BEFORE STORAGE

1. Brush off any dirt or debris from the machine, check for any damage or loose parts. Adjust / re-tighten where necessary for the next use.
2. Empty the fuel from the tank, and run the engine until it stops naturally.
3. Remove the spark plug, put a few drops of oil into the cylinder and then pull the recoil starter 2~3 times in order to distribute the oil evenly. Replace the spark plug.
4. Apply anti-rust oil to the metal parts such as the throttle wire, put the cover on the blade, and keep the machine well protected from the elements to avoid damp and frost.

9.SPECIFICATION

Model	EKPBC04
Engine Type	139F, 4-stroke , Air-cooled
Displacement	31cc
Ignition	CDI
Spark Plug	A52TC
Carburetor	Diaphragm type
Rated Output Power	0.8Kw
Idle Speed	2800-3000rpm
Fuel Tank Capacity	700ML
Oil Tank Capacity	80ML
Dimensions	180cm (overall length)
Working Pole	28mm (dia)* 1.5mm* 1.5m
Handle pole	19(diameter)*1.2(thickness) mm
Usage time of a full tank	Approx.45 minutes
Net Weight	Approx.8KG
Noise	106dB
Vibration	Left Handle:Max.Ahveq=6.5m/s ² Right Handle:Max.Ahveq=6.5m/s ²

10. GUARANTEE

This product is guaranteed against fault workmanship for a period of 24 months from date of purchase. It is not guaranteed against misuse, reckless use, abuse, or outside a domestic environment. Should you need to make a warranty claim, please contact your place of purchase for instructions. This is in addition to your statutory rights.

1. ENGINE – EXPLODED DIAGRAM

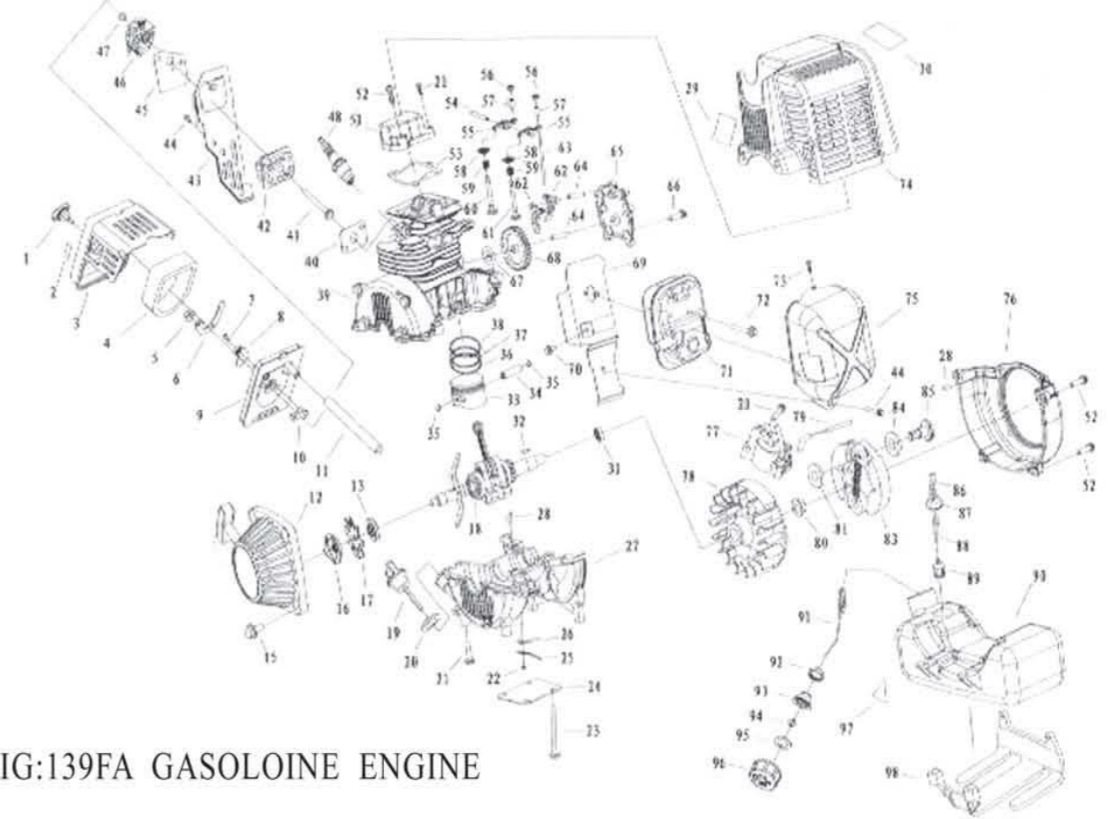
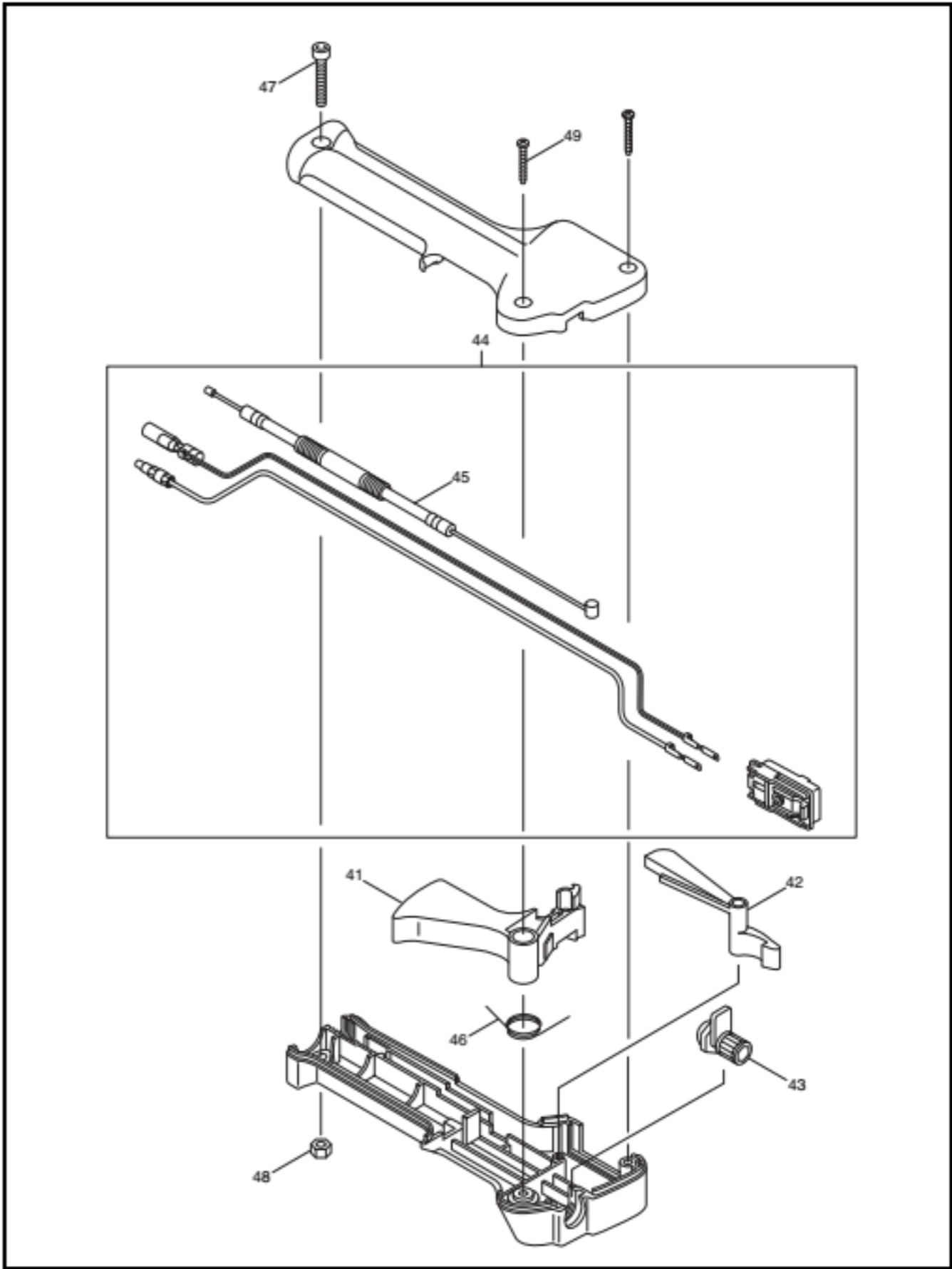
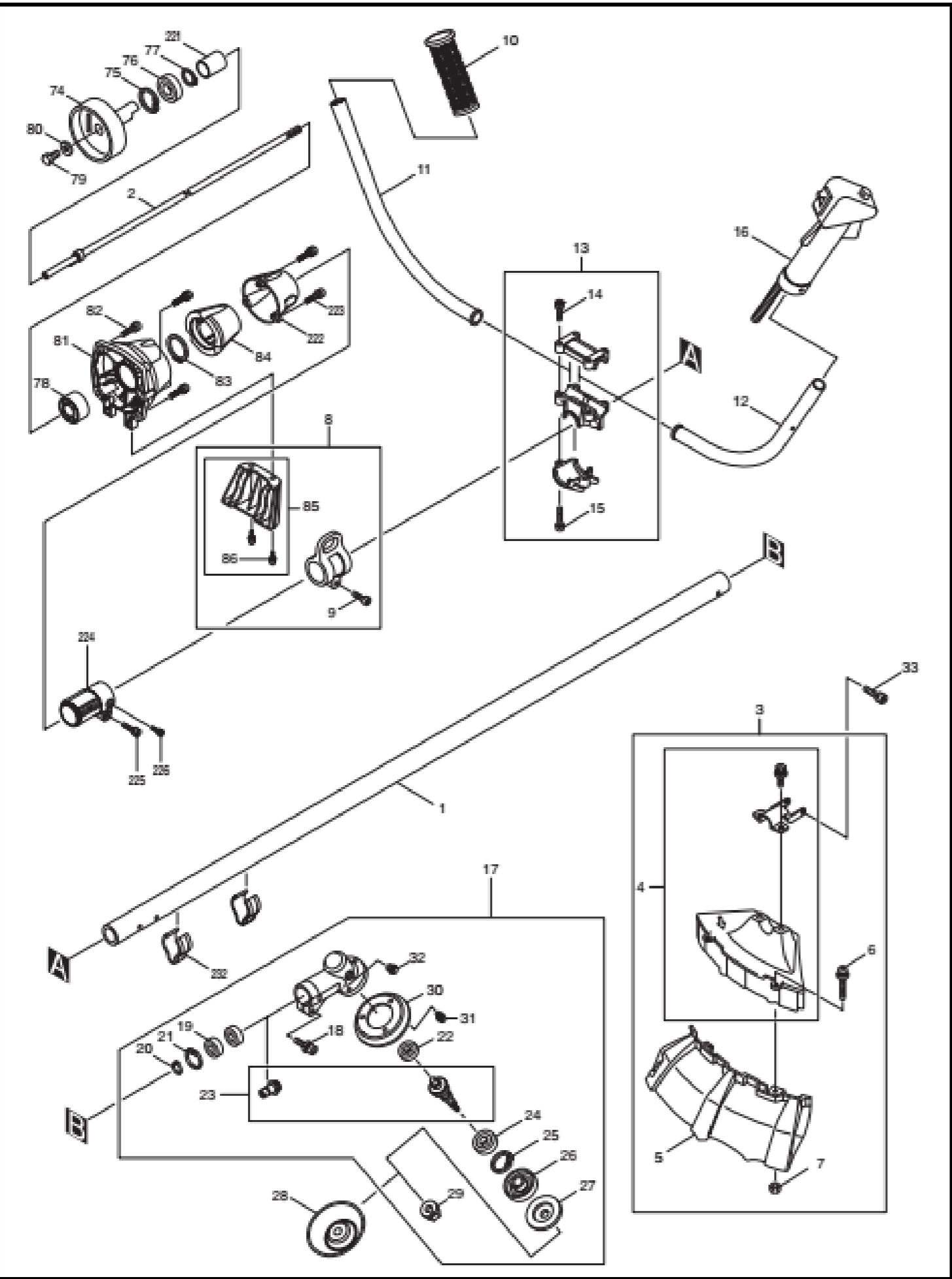


FIG:139FA GASOLOINE ENGINE

2. ENGINE PARTS LIST

N0.	Part NO.	Part Name	Qty.	N0.	Part NO.	Part Name	Qty.	N0.	Part NO.	Part Name	Qty.
1	1E34F. 1. 2	Screw	1	35	1E31F. 4-3	Ring	2	70	GB/T9074.5	Screw M5X8	1
2	1E40F-3A. 3-5	Sign	1	36	139F. 9.3	Oil ring	1	71	139F. 4	Muffle	1
3	139F. 2. 1-2	Gutside Cover	1	37	139F.9-5	Second Piston Ring	1	72	GB/T9074.13	Screw M5X50	2
4	139F. 2. 1-1	Filter Net	1	38	139F.9-4	Pirst Piston Ring	1	73	GB/T9074.6	Screw M5X16	1
5	GB/T6177.1	Nut M5	2	39	139F. 7. 1	Cylinder	1	74	139F. 3	Cylinder Cover	1
6	139F. 2. 1.1-3	baffler	1	40	139F. 2-3	Admitting Gasket	1	75	139F-1	Muffle Cover	1
7	GB/T845	Screw ST4.2x12-F-H	1	41	GB5780	Screw M5X75	2	76	139F-3	Fly Wheel Cover	1
8	139F. 2. 1.1-2	Choke	1	42	139F. 2-2	Admitting Pipe	1	77		Coil	1
9	139F. 2. 1.1. 1	Inside Cover	1	43	139F-6	Board	1	78		Fly Wheel	1
10	139F. 2. 1.1-1	Choke Handle	1	44	GB/T9074.5	Screw M5X8	4	79	139F. 5.1	Parking	1
11	139F. 2-4	Windpipe	1	45	139F. 2-1	Gasket	1	80	GB/T6177.2	Nut M10X1.25	1
12	139F. 10A	Starter	1	46	139F. 2. 2	Carburetor	1	81	1E36F-3	Gasket	2
13	139F. 8	Seal	1	47	GB2452.1	O Ring 5X2.65	1	83	1E40F-5.6A	Expander	1
15	GB/T9074.13	Screw M5X20	10	48	A5RTC	Spark Plug	1	84	1E40F-5-11	Washer	2
16	139F. 9-2A	Start Reel	1	51	139F. 11	Cylinder Cover	1	85	1E40F-5-12	Screw Pin	2
17	139F. 9-1	Fan	1	52	GB/T9074.13	Screw M5X25	6	86		Fuel Pipe	1
18	139F. 9.1	Grank Shaft	1	53	139F-5	Cylinder Cover Casket	1	87	1E36FF.8.1-1	Plug	1
19	132F-9	Dipstick	1	54	139F. 7-8	Rocker Pin	1	88		Fuel Pipe	1
20	142F-10	Seal	1	55	139F. 7-7	Rocker	2	89	1E34F.9.2-3B	Cleaner	1
21	GB/T9074.13	Screw M5X16	7	56	139F. 7-5	Adjust Nut	2	90	139F.1-1	Fuel Tank	1
22	GB/T9074.4	Screw M3X8	1	57	139F. 7-6	Jih Seat	2	91	1E32FL.6.2-4	Chain	1
23	GB/T9074.13	Screw M5X55	4	58	142F. 9-2	Spring Seat	2	92	1E32FL.6.2-3	End Cover	1
24	139F-4	Board	1	59	139F. 7-10	Spring	2	93	1E32FL.6.2-2	Inside Cover	1
25	139F. 7-18	Board	1	60	139F. 7-12	Input Valve	1	94	EB-415.4.1.1-1	Inlet	1
26	139F. 7-19	Reed	1	61	139F. 7-11	Output Valve	1	95	CG420.1.3.1-2	Gasket	1
27	139F. 7-16	Grank Case	1	62	139F. 7-3	Below Rocker	2	96	139F. 1. 1-1	Fuel Tank Lid	1
28	GBI 19.1	Pin B4X8	3	63	139F. 7-4	Jih	2	97	3WF8-7	Fire Sign	1
29	139F-9A	Oil Sign	1	64	139F. 7-2	Pin	2	98	139F-10	Fuel Tank Xog	1
30	EB-650-9	Sign	1	65	139F. 7-1	Cover	1				
31	139F.6	Seal	1	66	GB/T9074.4	Screw M4X16	5				
32	GB1099	Key 3X5X13	1	67	139F. 7-21	Board	1				
33	139F. 9. 2	Piston	1	68	139F. 7-22	Cam Wheel	1				
34	139F. 9-5	Piston Pin	1	69	139F. 12	Board	1				



NO.	NAME	NO.	NAME
1	Pole component	27	Outer plate
2	Drive shaft	28	Cup-shaped ring
3	Cover system	29	Nut M10
4	Cover component	30	Protection cover
5	Cover	31	Screw washer system
6	Half-round head screw M5X40	32	Bolt
7	Nut M5	33	Bolt M5X12
8	Rack component	74	Clutch drum
9	Hexagon socket screw M5X20	75	Inner shield ring
10	Left handle	76	Bearing 6003DDV
11	Handle	77	Outer shield ring
12	Handle	78	Outer shield ring
13	Holder component	79	Bolt
14	Hexagon socket screw M5X25	80	Washer
15	Hexagon socket screw M6X30	81	Clutch
16	Control handle component	82	Hexagon socket bolt
17	Gear box system	83	Outer shield ring
18	Hexagon socket screw M6X30	84	Cushioning tube
19	Bearing 6000ZZ	85	Fixing component
20	Inner shield ring	86	Screw M5X14
21	Outer shield ring 10	222	Clutch 2
22	Bearing 629	223	Hexagon socket bolt M5X18
23	Gear component	224	Scaffold tube
24	Bearing 6201DD/62012RU	225	Hexagon socket bolt
25	Inner shield ring	226	Hexagon socket bolt M5X8
26	Inner plate	232	Cable clip

NO.	NAME	NO.	NAME
41	Lever arm	46	Spring
42	Lever arm	47	Hexagon socket bolt M5X30
43	Regulator	48	Bolt M5
44	Control line component	49	Self-tapping screw M4X20
45	Pole		

EC DECLARATION OF CONFORMITY

The undersigned, as authorised by: Yongkang Gezhi Industry & Trade Co., Ltd
Declares that the following equipment manufactured by Yongkang Gezhi Industry &
Trade Co., Ltd

has been tested and conforms to the Directive: -

EN ISO 11806-1:2011

2006/42/EC

of the European Parliament and of the council on the approximation of the laws of the
Member States relating to the noise emission in the environment by equipment for use
outdoors.

Equipment Category - (As defined in the Directive)

Product Name: 4-STROKE BRUSH CUTTER / LINE TRIMMER

Model: GZ139F (ECKMAN MODEL NO.: EKPBC04)

Description: 4-STROKE

The technical documentation is kept by: Yongkang Gezhi Industry & Trade Co., Ltd

Add: Shiya Shangjie Village, Gushan Town, Yongkang, Zhejiang, China

The conformity assessment procedure followed was in according with annex (EN ISO
11806-1:2011 2006/42/EC) of the Directive.

A copy of this certificate has been submitted to the European Commission and to EU
Member State: the United Kingdom

Place of Declaration: Yongkang City, Zhejiang Province, P.R. China 321300

Date: December 11, 2015

Signed by:

杨国木

Position in Company: GENERAL MANAGER

Name and address of manufacturer or Authorised representative: Yongkang Gezhi
Industry & Trade Co., Ltd

Add: Shiya Shangjie Village, Gushan Town, Yongkang, Zhejiang, China

IMPORTED BY ECKMAN CO., LTD

ADD: 29 WELBECK STREET, LONDON W1G 8DA, ENGLAND

