

ECKMAN

Practical Solutions for the Garden

2-STROKE WHEELED PETROL GRASS TRIMMER MODEL EKPWT1 INSTRUCTION MANUAL



PLEASE READ AND SAVE THE INSTRUCTION MANUAL FOR FUTURE REFERENCE

Any questions please call the Eckman helpline on: 0844 441 3011 or go to www.eckman.co.uk

CONTENTS

Application.....	3
Specifications.....	3
Safety Definitions.....	4
General Safety Rules.....	4-6
Parts Identification.....	6-7
Assembly.....	7-9
Operating.....	9-12
Storage and maintenance.....	12-14
Guarantee.....	14
CE Declaration of Conformity.....	15
Exploded View and Parts List.....	16-18

Application

This equipment may only be used within the parameters and guidelines of these instructions. Usage outside of these specific parameters is not permissible and will render your guarantee and any claims against the manufacturer void. This equipment is intended for domestic purposes only for [grass trimming and brush cutting](#) . Industrial usage is not covered by this warranty.

Specifications

Eckman Model	EKPWT1
Dimensions	495x 505x 320mm
Gross Weight/Net Weight	15kg/13.5kg
Fuel Tank Capacity	1000ml
Engine Displacement	51.7 cc
Engine Type	2-Stroke, Air-cooled
Rated Output Power	1.5kw
Idling Speed	3000 rpm
Maximum Speed	90000rpm
Carburetor type	Diaphragm
Ignition system	Flywheel Magneto(C.D.I.)
Spark plug	CDK-BM6A
Mixture ratio (unleaded petrol: 2-stroke oil)	25:1
Noise Level-Brush Cutter	91.5dB
Noise Level-Grass Trimmer	93.7dB
Vibration Level	7.70m/s²

Safety Definitions

Read and understand all safety messages.



DANGER Indicates an imminently hazardous situation which, if not avoided, will result in death or serious injury.

CAUTION Indicates a potentially hazardous situation which, if not avoided, may result in minor or moderate injury.



Warning



Read the instruction manual



Wear eye protection, ear defenders and helmet



Wear foot protection



Wear gloves



Beware of foot injury by cutting attachment.



Beware of thrown objects hit by cutting attachment

Never use without properly mounted blade guard.



Keep 15 meters away from any other person.

General Safety Rules

This power unit and accessories can be dangerous!

When using the unit and accessories, follow basic safety precautions including the following which should always be followed to reduce the risk of serious personal injury and damage to the unit.

Read all these instructions before operating this product and save these

instructions. Be thoroughly familiar with the controls and the proper use of the unit. Never allow children to operate this unit.

Warning: Keep children, bystanders, and animals 50 feet (15 meters) away. If approached stop the unit immediately.

Warning: Sound pressure level emitted by the machinery is 91.5dB(Brush Cutter)and 93.7dB(Grass Trimmer) when in operation. Please use ear defenders.

1. Wear close-fitting clothes. Wear work clothes that will provide protection such as long slacks or trousers, safety work shoes, heavy duty work gloves, hard hat, a safety face shield or safety glasses for eye protection and a good grade of ear plugs or other sound barriers for hearing protection.
2. Run the unit in a safe place. Open fuel cap slowly to release any pressure which may have **formed in fuel tank**. To prevent a fire hazard, move at least 10 feet(3metres)from fuel area before starting.
3. Compliance with local fire prevention regulations is the user's responsibility.
4. Do not run engine in badly-ventilated areas. There is a danger of poisoning by carbon monoxide exhaust gas.
5. Turn unit off before setting down. Stop engine while transporting the machine.
6. Keep handles dry, clean and free of fuel mixture.
7. Always hold unit firmly using the handles and harness fitted to the machine.
8. Check all screws and fasteners are tightened before use. Never operate the equipment when it is not completely and securely assembled.
9. Use our genuine spare parts for repairing or replacing worn parts.
10. Check the area being worked before cutting to help avoid hitting small objects with cutting blades. When cutting on a slope, stand below blade.
11. Always keep balance. Never cut or trim on a hill or slope, etc. if there is the slightest chance of slipping, or losing firm footing.
12. Check area you will be trimming for debris that may be struck or thrown during operation.
13. Keep all parts of your body and clothing away from blades when starting or running engine. Before starting engine, make sure blade will not come in contact with any obstacles.
14. Stop engine before examining cutting blade.
15. Store equipment away from possible flammable material, such as gas-powered water heaters, clothes dryers, or oil-fired furnaces, portable heaters, etc.
16. Always keep the debris shield/guard in place when using the brush cutter or grass trimmer. Remember to keep blades and engine free of debris build-up.
17. Never operate while being tired, ill or under influence if alcohol or other drugs.
18. Check that there is no leakage of fuel from the tank.
19. To avoid electrical shock, avoid touching the high tension lead to the spark

plug whilst the engine is running.

20. DO NOT SMOKE while refueling and operating equipment.

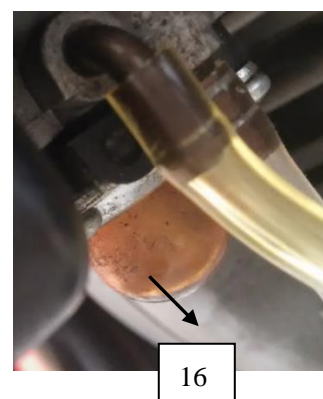
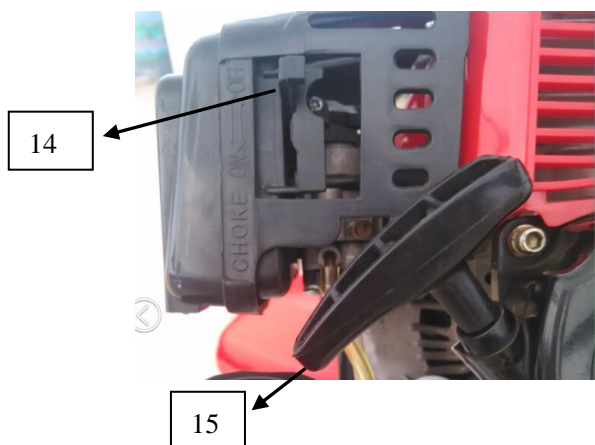
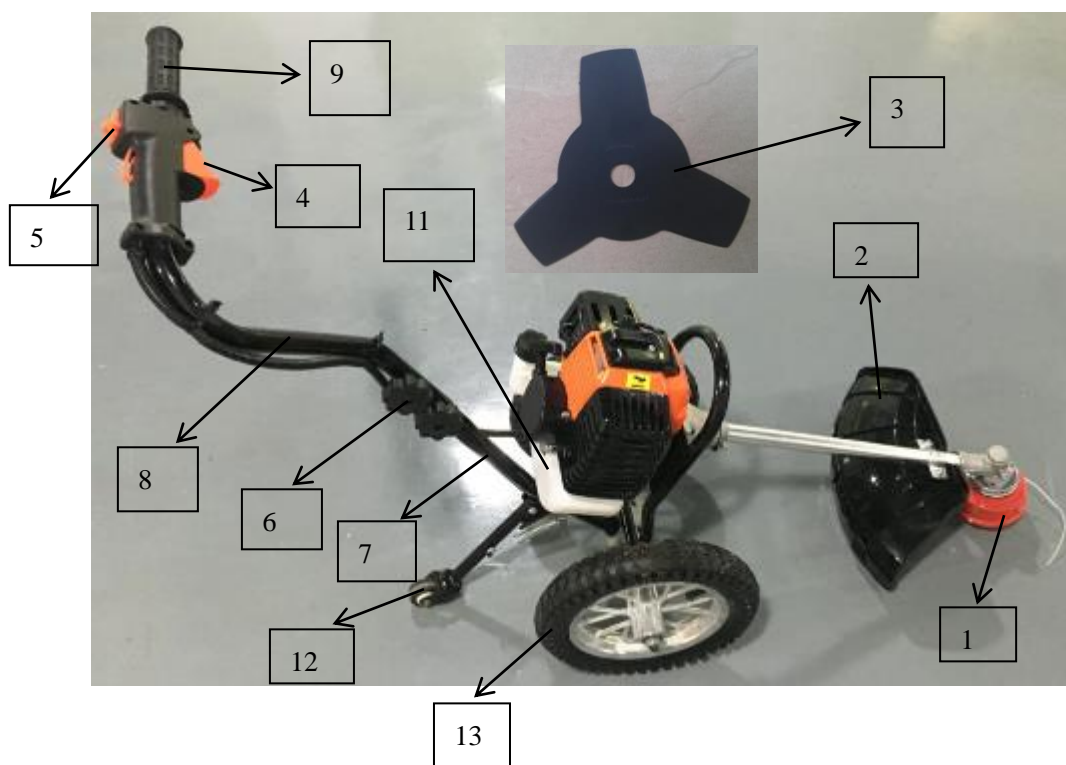
21. DO NOT OPERATE THE MACHINE WITHOUT THE SILENCER OR AIR FILTER properly installed.

22. DO NOT TOUCH the exhaust when the engine is running. Waiting for the engine to cool down.

23. DO NOT OPERATE UNIT IN AWKWARD POSITIONS such as when potentially off balance, with outstretched arms or one-handed. Always use two hands when operating unit and preferably wear protective non-slip gloves.

24. DO NOT ADD, REMOVE OR ALTER ANY COMPONENTS OF THIS PRODUCT. Doing so could cause personal injury and/or damage the unit and render your guarantee void.

Parts Identification

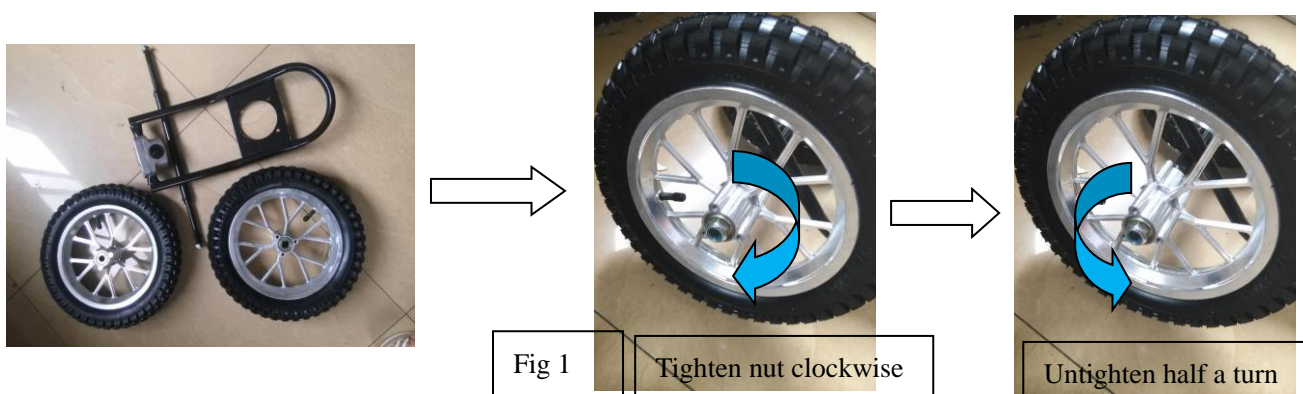


1	Line Cutting Head	9	Handle Grip
2	Plastic Guard	10	Fuel Cap
3	Brush Cutter Blade	11	Fuel Tank
4	Throttle Switch	12	Training Wheel
5	Engine Stop Switch	13	Driving Wheel
6	Frame Securing Knob	14	Choke Lever
7	Lower Handle	15	Recoil Starter
8	Top Handle	16	Primer Bulb
		17	Locknut

Assembly

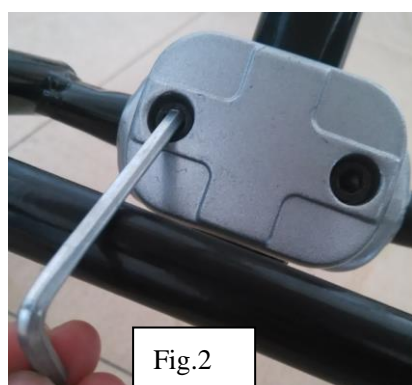
Unpack and make sure no parts are missing. All the screws are pre-fixed to the machine.

Fit one driving wheel to each side of the shaft. Push fully onto the shaft and tighten the nut clockwise until the wheel can't be turned by hand. Then release the tension on the nut by untightening it anti-clockwise about half a turn so that the wheel can be freely turned by hand.(see Fig.1)

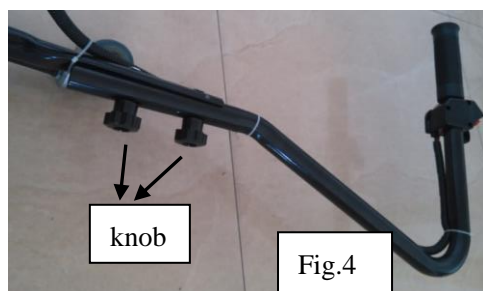


Fitting Lower Handle Top Handle

Unscrew the two bolts on the back of the fixing seat using the hex-key supplied, then insert the lower handle into the hole of the fixing seat (The training wheel has already been fitted to the lower handle).(see Fig.2 and 3)

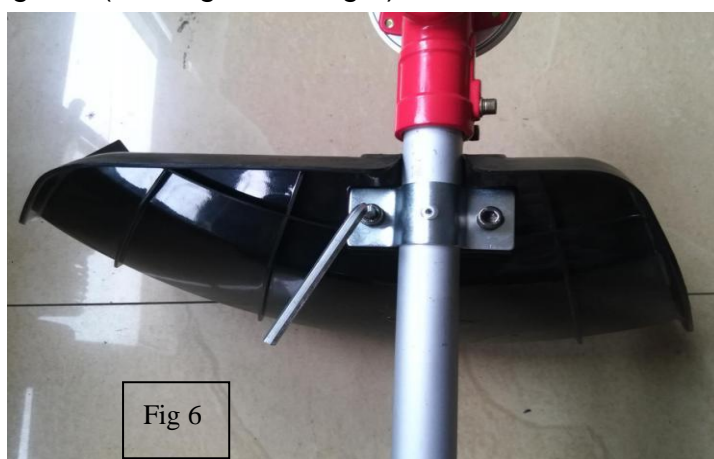


Connect the top handle to the lower handle using two knobs supplied.(see Fig.4)



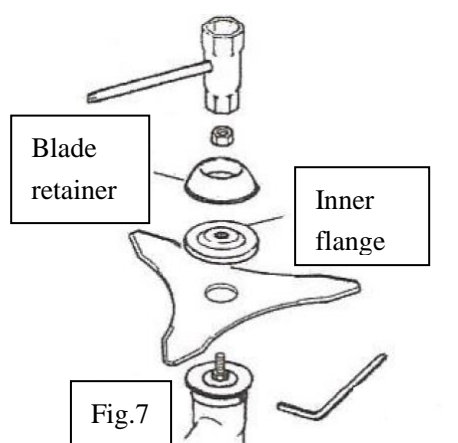
Fitting Plastic Guard

Unscrew the bolts on the chromed metal guard holder and mount on the plastic guard, line up the holes then fix and tighten.(see Fig.5 and Fig 6)



Fitting Brush Cutter Blade

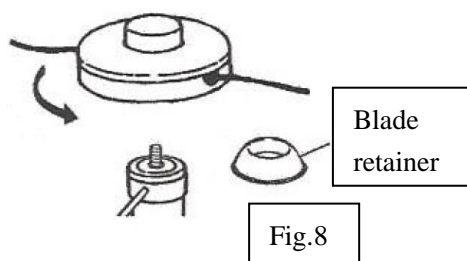
Mount the blade on the shaft, then put on the inner flange and blade retainer. Stop the blade from turning by using the hex-key. You'll need to line up the two holes in the side of the cutting head assembly and insert the hex key in them to keep the blade still.(see Fig.7)



If you use the unit as a grass trimmer follow the instructions below:

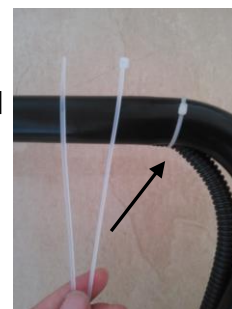
1. Loosen the blade retainer nut clockwise and remove the blade retainer and inner flange and blade.

2. Mount blade retainer and grass trimmer head, hand tighten it securely.(see Fig.8)



WARNING! Do not use the line cutting head without the plastic guard.

Note: Please store the blade retainer and nut in a safe place. Straps supplied are used to fasten throttle cable to handle , to avoid interference during operation.



Operating

PREPARATION FOR USE

1. Use fresh unleaded petrol to mix with 2-stroke oil on basis at a ratio of :25:1 petrol to oil. Use a separate container for mixing and shake well.
2. Place the power unit upright on the ground or on a sturdy bench and wipe any debris from around the fuel cap.
3. Unscrew the fuel tank cap and pour the unleaded petrol / oil mix into the tank with the aid of a funnel.
4. Be careful not to spill any petrol. If this happens, wipe the spill with a clean rag.
5. Start the engine at least three meters away from the area where the fuel tank has been filled up in order to avoid any risk of fire.

DANGER OF FIRE AND BURN INJURIES

1. Always use extreme care when handling fuel! Fuel is highly flammable.
2. Never attempt to put fuel in the engine if the fuel system components are damaged or are leaking.
3. Never attempt to refuel the engine while it is running or still hot. Allow it to cool first.
4. Never smoke or light any fires near the engine or fuels.
5. Always transport and store fuels in an approved container.
6. Never place flammable material close to a hot engine exhaust.
7. Do not use petrol which contains ethanol or methanol as it may damage the

fuel lines and other engine parts.

STARTING THE ENGINE:

1. Move the choke lever upwards to the “cold start” position.(see Fig.9)

(Note: This is not required if the engine is already warm.)



Fig.9

2. Press the primer button 8 times, until the petrol flows in and out of the discharge hose located above the fuel tank.(see Fig.10)

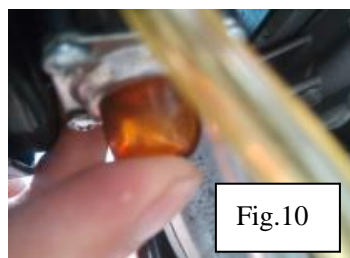


Fig.10

3. Pull the recoil starter 2-3 times until you hear the engine has “Bomb” sound which is nearly starting. The engine may start, or it may be required to pull on the recoil starter until the engine starts.(see Fig.11)

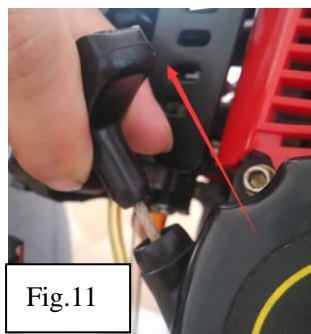


Fig.11

4. Move the choke lever downwards to the “run” position (warm start) .(see Fig.12)

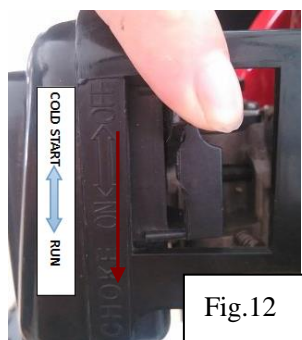


Fig.12

5. Pull on the recoil starter once again. Allow the engine to run idle for around 10 seconds to let it warm up.

6. To speed up, set the Throttle Switch to the “H” position.



Fig.13

Note: Check the blade to make sure it does not turn when the engine is at idle. If the blade rotates even a little, using a Philips head screwdriver, lower the idling speed by adjusting the carburetor as shown below. (turn clockwise to increase idle speed/counter-clockwise to reduce. Turn in increments of $\frac{1}{4}$ max.



Stopping the engine:

Warning: Cutting blade will continue to rotate for a few seconds after the engine has stopped.

1. Release the throttle trigger and allow the engine to idle for a few moments.
2. Move the ignition switch to the off position marked STOP.

3.The engine will now stop.

IMPORTANT!

Running in the engine

During the first ten hours of work, run the engine at a moderate RPM and not at full throttle. **Allow 10 hours of use to run in the engine.**

It is at the end of the run-in period that the engine will reach its maximum power.

After the first two hours of work, stop and make sure that all nuts and screws are securely fastened, and tighten them if necessary.

Storage and Maintenance

- When you finish working, clean completely, making sure there is no grass or dirt wrapped in the cutting teeth, wipe with a slightly oily rag and replace blade covers.
- Store away from direct sunlight and out of the reach of children.
- Do not store in a nylon bag as this can encourage the formation of mould.
- At the end of the season, give the equipment an overall cleaning and a thorough check.

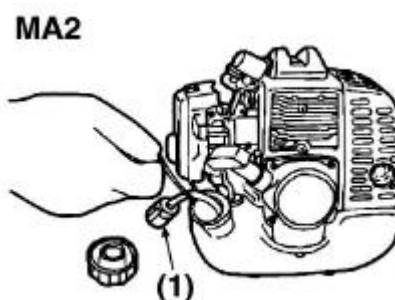
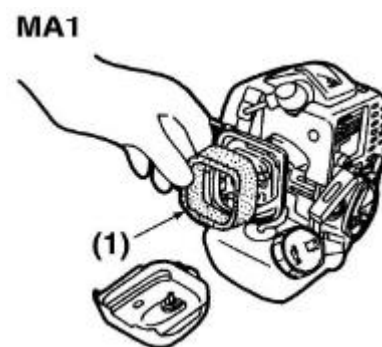
Air Filter

Accumulated dust in the air filter will reduce engine efficiency increase fuel consumption and allow abrasive particles to pass into the engine. Remove the air filter as often as necessary to maintain a clean condition.

Remove filter cover by unscrew the bolt.

Light surface dust can readily be removed by tapping the filter.

Heavy deposits should be washed out in warm soapy water.



Fuel Filter:

- The fuel tank is fitted with a filter.
- The filter is situated at the free end of fuel pipe and can be picked out through fuel port with a piece of hooked wire or

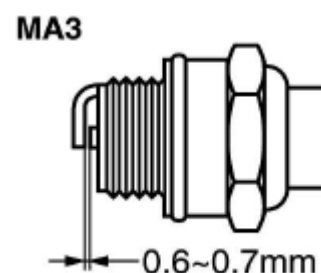
similar.

- Check the fuel filter periodically. Do not allow dust to enter the fuel tank. Clogged filter will cause difficulty when starting engine or abnormalities in engine performance.
- When the filter is dirty, replace the filter.
- When the inside of the fuel tank is dirty, it can be cleaned by rinsing out with petrol.

Checking the Spark Plug

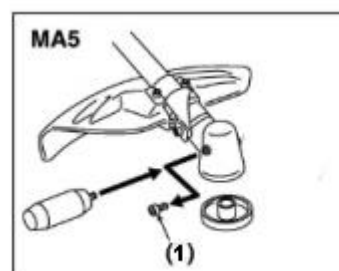
Check the spark plug every 10-15 hours of use.

1. Remove the spark plug cover.
2. Use the spark plug wrench to remove the spark plug, by turning it counter-clockwise.
3. Clean and adjust the spark plug gap to 0.6-0.7mm. Replace any damaged or visibly worn plug with a CDk or equivalent spark plug.
4. Install the spark plug finger tight in the cylinder head, then tighten it firmly with the spark plug wrench.



Supply of grease and lubricant

Supply grease to the gear case through the grease hole every 10 to 20 hours using a grease gun (Shell alvania No.3 or equivalent) .



(1) Grease Hex Bolt

Cleaning of silencer exhaust port

- Check silencer exhaust port regularly.
- Carefully scratch the deposits if it's clogged using a suitable tool.
- Do not allow carbon to fall into engine ports.



Whenever the machine is not used for a long period of time,

proceed as follows:

- Empty the fuel tank completely.
- Protect all metal engine parts from corrosion by coating them with oil.
- Remove the spark plug, put a few drops of oil into the cylinder and then pull the recoil starter 2 to 3 times in order to distribute the fuel evenly. Replace the spark plug.

GUARANTEE

This product is guaranteed for a period of 12 months from date of purchase. Any modification or misuse of this machine will invalidate your guarantee. Your statutory rights remain unaffected.

EC Declaration of Conformity

We, the

SUZHOU STRIDE ACROSS INTERNATIONAL TRADE CO.,LTD

Address: Room 1205,NO.1 ganglong business buliding,NO.99 xiahestreet,economic industrial development,Kunshan city

China hereby declare by our own responsibility that the product :

GASOLINE BRUSH CUTTER AND GRASS TRIMMER , EKMAN MODEL EKPWT1

Is according to the basic requirements ,which are defined in the European directives :

2006/42/EC(MD),2014/30/EU(EMC)

And their amendments.

For the evaluation of conformity ,the following harmonized standards were consulted and applied:

EN ISO 11806-1:2011,EN ISO 12100:2010,EN ISO 14982:2009

TEST REPORT:

REF.NO.: CE201602801



SUZHOU, JUNE, 2016

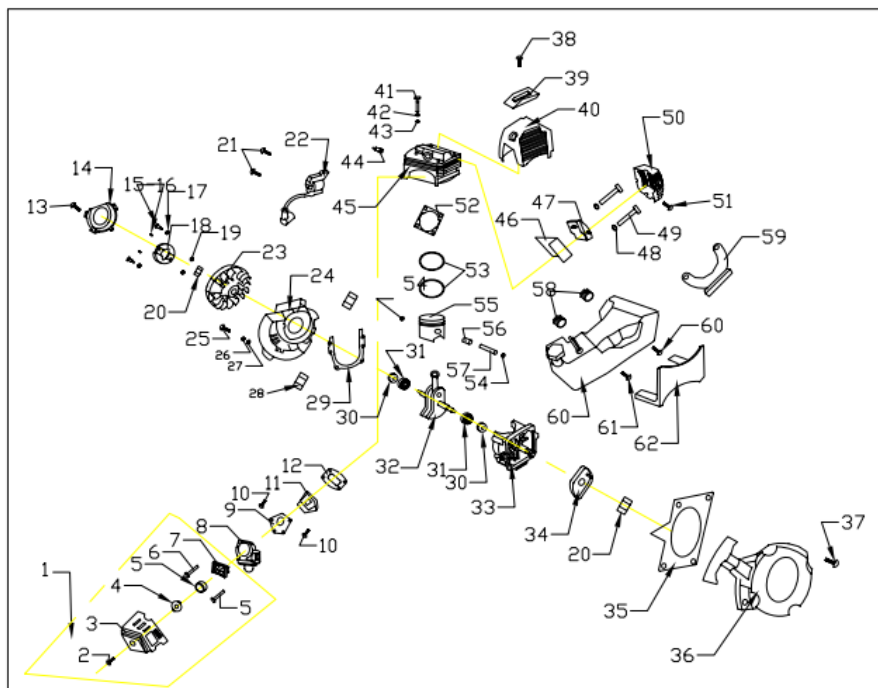
MANUFACTURING COMPANY STAMP



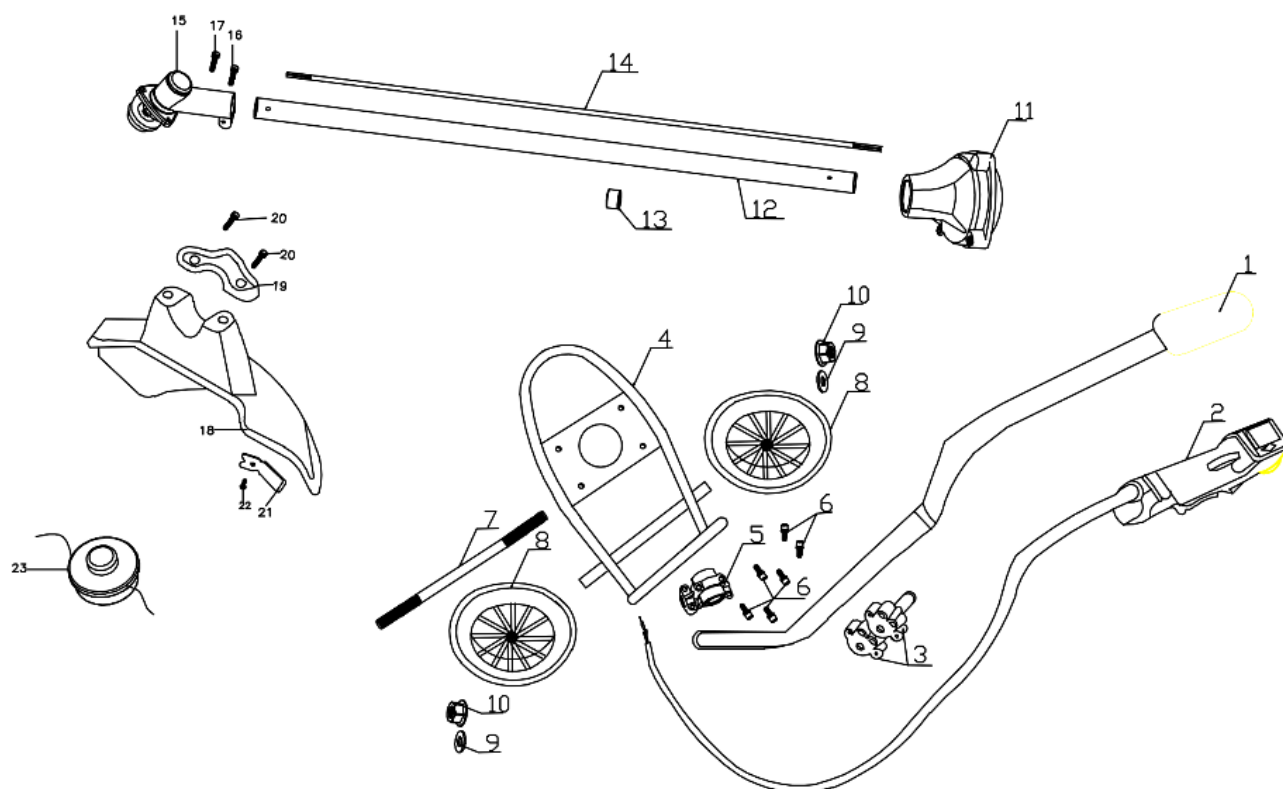
IMPORTED BY ECKMAN CO.,LTD

ADD: 29 WELBECK STREET,LONDON W1G 8DA, ENGLAND

Exploded View and Parts List



1	air filter assembly	1	32	crankshaft	1
2	philips screwM5×16	1	33	right-box	1
3	air filter cover	1	34	starting disk	1
4	plate	1	35	al plate	1
5	sponges	1	36	starter assmebly	1
6	philips screwM5×55	2	37	philips screwM5×18	4
7	air filter bracket	1	38	philips screwM5×12	1
8	carburetor	2	39	cover	1
9	carburetor gasket	1	40	cylinder cover	1
10	philips screwM5×25	1	41	inner hexagonal screwM5×25	4
11	intake	1	42	lock washerØ5	4
12	intake gasket	1	43	washerØ5	4
13	philips screwM5×20	6	44	spark plug	1
14	wheelhouse	1	45	cylinder	1
15	pinØ5×10	2	46	muffler gasket	1
16	location bolt	2	47	muffler	1
17	gasket	2	48	washerØ5	2
18	clutch	1	49	two-head boltM5×60	2
19	clutch gasket	2	50	muffler cover	1
20	nutM8	1	51	philips screwM5×12	1
21	philips screwM5×16	2	52	cylinder gasket	1
22	transistorized digital igniter	1	53	piston ring	2
23	flywheel	1	54	snap spring	2
24	left-box	1	55	piston	1
25	inner hexagonal screwM5×20	4	56	needle roller bearing	1
26	lock washerØ5	4	57	piston pin	1
27	washerØ5	4	58	shock-absorbing frame	2
28	pinØ5×10	2	59	fuel tank bracket	1
29	box-gasket	1	60	fuel tank assembly	1
30	oil sealØ12×Ø22×Ø7	2	61	screwM5×15	2
31	bearing6202	2	62	fuel tank protective bracket	1



1	Handle	13	Bearing
2	Cable switch	14	Rotation shaft
3	Handle assembly knobs	15	Cutting head
4	Frame	16	Screw
5	Fixed Seat	17	Screw
6	Screws	18	Plastic guard
7	Drive shaft	19	Plastic guard pressing plate
8	Wheel	20	Screw
9	Gasket	21	Blade
10	Nut	22	Tapping screw
11	Terminal pad	23	Line cutting head
12	Pole		